

Model: EYV

Concept: PERFORMING ARTS

Costume: ART & DESIGN

Hair: HAIRDRESSING

Lighting: MEDIA

Makeup: BEAUTY

Set Design: CONSTRUCTION

Shoot Catering: HOSPITALITY & CATERING

Shoot Organisation: BUSINESS & ADMINISTRATION



NEW COLLEGE DURHAM

Full-time Further Education
and Sixth Form Centre

COURSE GUIDE 2012/13





NEW COLLEGE DURHAM

WHAT'S IN THIS GUIDE?

2	New College Durham	
4	Essential Information	
6	Where to follow us	
8	Crackin' Results	
10	Open Events	
12	Looking for Help?	
14	Learning Coaches and Personal Tutors	
16	Explore Sport	
18	Great Fun	
20	Enjoy Football	
22	Diversity and Difference	
24	Unique Facilities	
26	Resources	
28	Higher Education	
30	Access Fund	
32	More Skills	
34	Guidance and Support	
36	Unrivalled Transport	
38	Intelligent Access	
40	Done! When You Finish	
42	Entry Requirements	
44	Vocational Student Profiles	
46	Full-time Courses	
108	Sixth Form Centre	
118	Sixth Form Centre Student Profiles	
168	How to Apply	
170	Application Form	

Every effort was made to ensure that the information in this guide was correct at the time of going to print (August 2011).

New College Durham reserves the right to amend information at anytime.



ESSENTIAL INFORMATION

WELCOME TO NEW COLLEGE DURHAM

WHAT IS FULL-TIME FURTHER EDUCATION?

Full-time further education is learning that continues after the age of 16 (except at university). Further education courses includes A Levels and work related vocational qualifications.

WHAT ARE VOCATIONAL QUALIFICATIONS?

Vocational qualifications such as Awards, Certificates, Diplomas and National Vocational Qualifications (NVQs) offer you a more practical learning programme, that relates directly to specific job roles or sectors. If you take a vocational qualification you will study and gain skills in a particular area. These qualifications follow a course structure and have an emphasis on developing your practical skills and knowledge.

WHAT IS A SIXTH FORM CENTRE?

If you prefer academic study with end of year exams then our Sixth Form Centre is for you. You can usually chose four subjects to study at AS Level for the first year then carry three subjects into your second year (A2 Level). A Levels are made up of both AS and A2 Levels, however AS Level is a free standing qualification in itself.

WHAT IS AN APPRENTICESHIP?

An Apprenticeship combines hands-on training with studying at College, allowing you to learn on the job while gaining knowledge, skills, recognised qualifications and earn money. For more details see our separate Apprenticeship Guide.

ACCESS TO HIGHER EDUCATION

The Access to Higher Education course is designed to give mature students the skills and knowledge to progress onto a higher education programme. See page 48 for more details.

You can download a copy of all our guides at www.newcollegedurham.ac.uk/downloads or you can call 0191 375 4040.





WHERE TO FOLLOW US



FIND US ON FACEBOOK

Want up to date information about what is happening at the College?
Find us on Facebook - just search '**Official New College Durham**'.

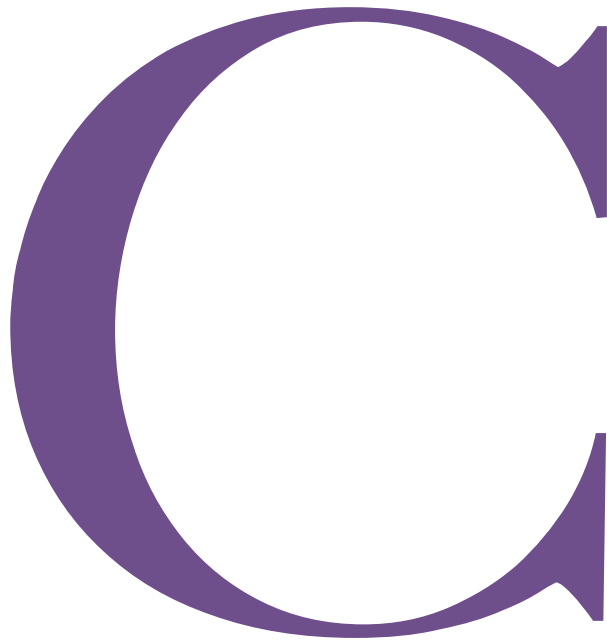


QR CODES

Ever wondered what those little black and white boxes popping up everywhere actually are? QR codes are the easy way to get a phone number, email address or website on your phone. All you need to do is get a QR Code Reader and point your smartphone's camera at the barcode. The phone number, address or even website will appear on your phone!

QR CODE READERS

Open your smartphone's app downloader and search for a 'QR Code Reader', some are available for free. Once the app has downloaded simply open it up and follow the instructions. For most, just point your phone's camera at the QR codes in this guide to see where they will take you!



CRACKIN' RESULTS

WE'RE IN THE TOP 10% OF COLLEGES NATIONALLY FOR
PERFORMANCE AND SUCCESS RATES...AGAIN.
RESULTS THAT CONTINUE TO MAKE US PROUD.



In 2009/10 our overall success rate again placed us in the top 10% of all colleges nationally, for the fourth consecutive year. Not only that, but both our student achievements and retention rates remain among the best in the country. Our support for learners continues to be outstanding, with 94% of students who join courses at the College completing their studies; that's 9 out of 10 students and 6% above the national average.

NEW COLLEGE DURHAM IS OFFICIALLY 'OUTSTANDING'

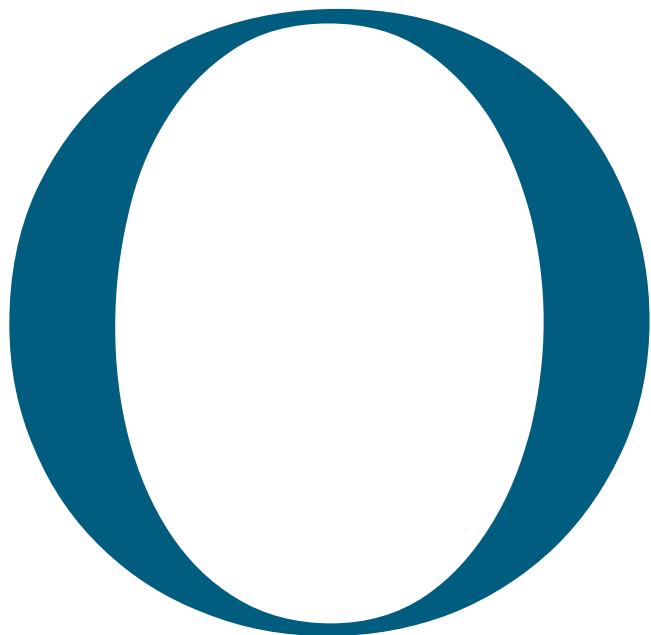
In our latest Ofsted Inspection (June 2009) we obtained a clean sweep of five Grade 1 (outstanding) judgements. This outstanding performance also resulted in the College receiving recognition of its excellence and innovation, by being awarded the prestigious 'Beacon College' status by the Learning and Skills Improvement Service (LSIS) in March 2010.

Key strengths from our latest Ofsted Inspection Report include:

- outstanding success rates on most programmes
- excellent range of progression routes
- wonderful accommodation and resources
- outstanding support for learners
- culture of mutual respect and support
- high proportion of good teaching.

In June 2010, Ofsted confirmed through Survey Inspection Arrangements that New College Durham is a provider that offers Outstanding numeracy provision, agreeing that overall New College Durham is outstanding at tackling the challenge of ensuring that young people and adults gain the numeracy skills they need for their careers and personal lives.





OPEN EVENTS & IMPORTANT DATES

VERY IMPORTANT DATES.
PLAN YOUR NEXT MOVE.

WE'D LOVE TO MEET YOU

Come and get to know us at one of our Information and Advice events.

You can find out all you need to know by chatting face-to-face with our specialist tutors or our impartial careers advisers and having a tour of our fantastic campus. Bring along your friends and family too.

Events generally take place on the first Tuesday of every month (except January, April, June and August) between 5.00pm and 7.00pm.

Tuesday 4 October 2011
 Tuesday 1 November 2011
 Tuesday 6 December 2011
 Tuesday 10 January 2012
 Tuesday 7 February 2012
 Tuesday 6 March 2012
 Tuesday 27 March 2012
 Tuesday 1 May 2012
 Tuesday 12 June 2012
 Tuesday 3 July 2012

EVENT 2020

SATURDAY 19 NOVEMBER 10AM - 3PM

Get involved in loads of fun activities and taster sessions at our free family fun day. While you're here you can find out what's on offer at the college, get advice on any subject for any level and even apply for one of our programmes.

Please check out our website for other specialist open days throughout the year.

AUGUST GCSE RESULTS DAY ONWARDS

The College is open following GCSE results day offering information, advice and support. For further details check out our website over the summer.

SEPTEMBER WELCOME WEEK

If you are accepted onto a course you will be invited into the College during Welcome Week for induction, to enrol, meet your tutor, tour the College, see our facilities, meet new friends and prepare for the next step in your learning experience.

L

LOOKING FOR HELP?

WE'RE HERE FOR YOU.



New College Durham is committed to providing a high quality, confidential and impartial information, advice and guidance service. ASC (Advice Support Careers) offers information, advice and guidance on careers and financial support and personal counselling. Our Learner Development Co-ordinator, based in the Students' Union, can also help with social and health related issues.

You can contact the ASC team before you start College and throughout your course. You are entitled to a careers education programme and opportunities to discuss future options, career plans, funding opportunities, welfare issues or any personal concerns.

ASC also have a careers library and information centre, which you can access

during our opening times. For further details contact ASC on 0191 375 4400 or email asc@newdur.ac.uk.

LEARNER SUPPORT FUND

For details on the Learner Support Fund log on to www.newcollegedurham.ac.uk or call the Access Fund Administrator on 0191 375 4205 or email access.fund@newdur.ac.uk.

asc
advice
support
careers



L

LEARNING COACHES & PERSONAL TUTORS

HELPING YOU FULFIL YOUR POTENTIAL.



PERSONAL LEARNING COACHES

Personal Learning Coaches (PLCs) can help you make the most of your time and the opportunities available in College. They can offer advice and encouragement, as well as assisting you to set achievable targets. They have the time, expertise and energy to help you develop, mature and reach your own unique potential.

PERSONAL TUTORS

As a student you will have a personal tutor, who will meet you on a regular basis. Your personal tutor will help you settle into College. They will also liaise with your parents/carers. You will have weekly group tutorials covering career and educational progression, personal development and study skills. Personal tutors will also meet you individually at least four times a year, to complete your individual learning plan to ensure you are progressing well.

E

EXPLORE SPORT

YOU'RE ON TO A **WINNER**.



SPORTING ACTIVITIES FOR YOU TO ENJOY

If you've got a talent for sport, or just love it, you'll want to get involved with our Sports Development Department. We run a wide range of sports activities throughout the week, which take place during lunchtimes (12noon - 1.00pm), and after College (4.00pm - 5.00pm).

If you have a competitive streak we also have a range of different sports teams, which compete against other schools and colleges in the area.

SPORTS CO-ORDINATOR

The Sports Co-ordinator will visit all tutor groups throughout the year and discuss the range of sport and active leisure opportunities available to all students. The Sports Co-ordinator is based in the Steps2Fitness office in the Sports and Music Building.

For further information contact the Sports Development Team on 0191 375 4328.

G

GREAT FUN

ENJOY COLLEGE LIFE EVEN MORE.



We want to ensure that you have the best possible time at College. That's why we are committed to the social, cultural and academic development of all our students. You can get involved with activities in your subject area(s) and tutorials such as visits, guest speakers, conferences, field trips and residentials.

STUDENTS' UNION

Our Students' Union (SU), along with our Learner Development Co-ordinator, can offer you informal one-to-one support and the opportunity to get involved in a range of College activities and voluntary work. The NUS Extra Card, from the Students' Union, can get you discounts at some of your favourite shops and restaurants.

The Student's Union organise lots of activities including, a fresher's fair, health events, social events such as boat parties, end of term balls and paintballing. It can also provide funding and support for societies and clubs that students wish to start. There are Student Union forums and the chance to volunteer as a peer mentor.



E

ENJOY FOOTBALL?

NEW COLLEGE DURHAM
FOOTBALL **SCHOLARSHIP** SCHEME



If you've got a passion for football and are aged 16 to 19, you can join our Football Scholarship Scheme. This unique opportunity allows you to combine your academic studies with professional football training. Our Football Scholarship Scheme will enable you to continue with your full-time further education while pursuing your sport.

You will study a Level 3 nationally recognised qualification heavily related to football. Example units are:

- Technical & Tactical Skills
- Analysis for Sport
- Fitness Training
- Sports Psychology
- Nutrition

As a member of the Football Scholarship Scheme you will receive:

- 10 hours of professional coaching, training and playing per week
- individual player assessment and analysis of performance and fitness by our fully qualified professional football coaches, sports scientists and strength & conditioning coaches
- the opportunity to gain nationally recognised qualifications
- the opportunity to represent the Football Development Centre in the English Colleges Football League
- the possibility of representing England at International level.

For further information contact the Football Academy Manager on 0191 375 4922.



DIVERSITY & DIFFERENCE

OUR COMMITMENT TO CELEBRATING
DIVERSITY AND DIFFERENCE.

At New College Durham we strongly believe that everyone is entitled to:

- be treated fairly and with respect
- be regarded as of equal value
- work and learn in an environment that is free from harassment, discrimination and victimisation.

The College actively celebrates diversity and promotes equality of opportunity for everyone, whatever their sex, race, religion, age, marital status, intellectual or physical capability, political beliefs, sexual orientation, social or cultural background and gender identity.

All students and staff are responsible for ensuring that they:

- do not discriminate against or harass others
- actively discourage any discriminatory behaviour
- report any incidents of harassment or discrimination - all such incidents are considered to be serious misconduct and will be dealt with promptly.

As a student you will have a part to play in helping us to create a college environment which welcomes, values and builds on Diversity and Difference.



UNIQUE FACILITIES

WE'VE GOT **EVERYTHING** YOU NEED ON CAMPUS.

We have a range of services open to students and the general public.



RELAX

Halo, our hair and beauty salon, offers everything from the latest cut, to a relaxing massage and even fake tan. You can book your holiday through our own fully bonded travel agency, Global Travel. There are plenty of places to eat, whether you want a hot meal from The Mix, a snack from the Sports Café or just a drink from Costa Coffee Bar. For something a bit different head to Le Nouveau Restaurant which trains our budding chefs. If you're looking for your favourite magazine and a quick snack try our onsite shop, POD.

FITNESS FANATICS

If you're a fitness fan then Steps2Fitness gym is the place to head to. We offer all the latest SportsArt cardio equipment along with a great mix of free weights and resistance machines to help you get in peak physical condition. Our dedicated staff are committed to offering you the latest up to date training methods to help you achieve your goals.

There are a wide range of activities and clubs to join in our huge multipurpose sports hall. We also run Rachel Morgan Fitness classes in our exercise studio including the popular Body Pump, Body Combat, Body Jam and Body Balance.

PLACES FOR LITTLE ONES

If you're looking for a safe, secure and happy environment for a little one aged 0-4, then our Ofsted registered nursery is also onsite. Contact Bright Beginnings on 0191 375 4429.

halo

Steps2Fitness



R

RESOURCES

A GREAT PLACE FOR YOU TO
STUDY AND MAKE NEW FRIENDS.



Our multi-million pound campus is a fantastic place to study and have fun.

Our inspiring open spaces and modern buildings are complemented by a large outdoor Piazza, which is a great place to catch up with friends. There's loads of space for everyone with over 500 car parking spaces available for students and also racks for bicycles.

LEARNING RESOURCES CENTRE

With free internet access, loads of PCs and great study areas, you'll have everything at your fingertips to help you get the most out of your time with us.

Our Learning Resources Centre houses both the Library and the e-Learning Centre. Here you'll find over 200 networked computers, more than 60,000 books, 200 journals and a massive range of online resources, including: e-books; e-journals; databases and Internet access to help you with your assignments.

There are areas for group work for you and your friends and a Quiet Study Area for when you just need a bit of peace to concentrate. If you need a chat with one of the Personal Learning Coaches you can find them in the Coaching & Learner Zone.

If you need stationery then the e-Learning Centre can help - or you can pop along to our Media Store, which holds a full range of stationery products.

H

HIGHER EDUCATION

STUDY FOR A **DEGREE** WITH US.



If you don't want to leave us then you don't have to! You can stay on with us and join one of our higher education or professional qualification programmes. We can offer you a supportive environment, accessible lecturers and an excellent learning experience.

We offer a wide range of full and part-time higher education programmes and professional qualifications including foundation degrees, honours degrees, Higher National Certificates (HNCs) and Higher National Diplomas (HNDs).

All our qualifications are career focused, with our higher education programmes devised in consultation with local employers to ensure that the programme you are studying on prepares you directly for employment.

FOUNDATION DEGREE AWARDING POWERS

New College Durham has become one of only two colleges in the country to be granted the power to award its own Foundation Degrees. Our successful application established that we are well-founded, cohesive and a self-critical academic community that demonstrates firm guardianship of our standards. This means we can now award our own Foundation Degrees.

If you would like more information on our programmes please pick up a copy of our higher education prospectus or download one online at www.newcollegedurham.ac.uk/downloads.



ACCESS FUND



There have been a lot of changes to funding and finance for students during 2011. The information below is for the academic year 2011/12.

GUARANTEED BURSARY SCHEME - AGED 16-18; FULL-TIME STUDENTS

If you're in care, a care leaver or on income support you may be eligible for a bursary. Income support is paid to teenage parents, young people with disabilities or those living away from their parents. This bursary cannot be combined with the Discretionary Bursary below. Consideration will be taken of the benefits already received by you from New College Durham.

DISCRETIONARY BURSARY SCHEME - AGED 16-18; FULL TIME STUDENTS

This bursary will be means tested and depending on your household income, you could qualify for additional financial help. This bursary cannot be combined with the Guaranteed Bursary above.

ADULT BURSARY

If you're aged 19 or over and are looking to return to education you may be eligible for additional assistance. This can help pay towards books, travel costs and childcare. This bursary will be means tested, depending on you and your partner's income and if you are receiving certain benefits.

Terms and conditions apply.

For further information please contact the Access Fund Administrator at access.fund@newdur.ac.uk or call 0191 375 4205.

For up to date information please visit our website www.newcollegedurham.ac.uk.

New College Durham reserves the right to amend information at any time.

MS

MORE SKILLS

Employers and Universities want young people with good skills in English, Mathematics and ICT. Improving these skills will help you to ensure you make the most of your time at New College Durham and progress to the course or job of your choice. It doesn't matter which course you choose you will also study Functional Skills qualifications.

Functional skills are the practical skills that equip you with the necessary knowledge and understanding to use and apply English, Mathematics and ICT in everyday life. All full-time students are required to take at least one Functional Skills qualification and achieve this in order to progress to the next level of study.

New College Durham aims to ensure that:

- you are able to study relevant functional skills qualifications in English, Mathematics or ICT as part of your learning programme
- you can solve problems or work independently on key tasks
- you gain the skills you need for learning, work and adult life.

Functional Skills form an integral part of every full-time course and will help to ensure you are capable in English, Mathematics or ICT relevant to your chosen career path, within your specialist area.

G

GUIDANCE AND SUPPORT

SPECIALIST SUPPORT
INDIVIDUALLY TAILORED TO YOU.



New College Durham is fully committed to helping you achieve on your chosen course and has an extensive range of support available to you.

This includes sensory, medical/mobility and mental health support. In addition support is available for specific learning difficulties such as Dyslexia and English for Speakers of Other Languages (ESOL).

We can offer you:

- advice and support pre-entry, on-course and for progression to further study
- assessment of support needs
- a range of highly trained staff to support you
- specialist resources and equipment
- examination arrangements.

For further information, or to discuss your individual needs, contact the Learning Support Office on: Telephone 0191 375 4380, Minicom 0191 383 2371 or SMS 07740 924847.

U

UNRIVALLED TRANSPORT



New College Durham currently offers existing students **free** term time weekday travel to and from college. We have teamed up with Arriva and Go North East to provide Flex & Travel for full-time further education students.

Students studying with us in 2011/12 can travel **free** to and from College weekdays during term time until 6pm on services operated by Arriva or Go North East, depending on their ticket choice.

Students can use their bus tickets throughout the academic year until the end of the summer term when attending College.

For up to date information on our Flex & Travel scheme visit www.newcollegedurham.ac.uk/travel

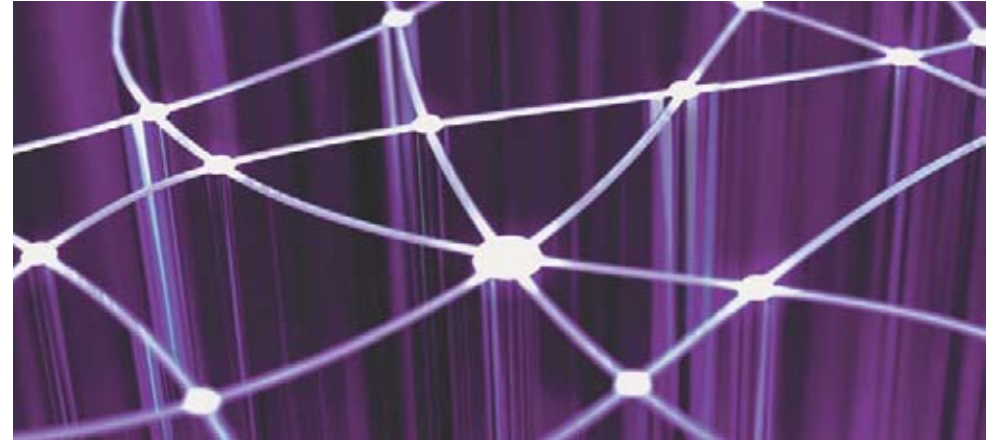
New College Durham reserves the right to amend information at anytime.





INTELLIGENT ACCESS

ALL THE INFORMATION YOU NEED
AT THE CLICK OF A BUTTON.



NCD Online is our Virtual Learning Environment (VLE). This is a system designed to deliver a better, more effective learning experience. Your tutors can upload course resources/information onto NCD Online and you can access them at a time convenient to you.

NCD Online can also provide lots more including:

- important announcements, course information and discussions
- course handouts/learning resources (documents, presentations)
- links to external learning resources (websites)
- assignments and assessments
- contact details for tutors and students
- blogs, Wikis and Reflective Journals
- online collaboration and communication
- space to save your work
- the ability to create e-portfolios
- the ability to check your work with plagiarism software
- access to the Student Intranet
- access via Facebook, iPhones & iPod touch
- receive sms messages from your tutor
- accessibility software to aid in the learning process.

All of this is accessible at any time of the day, anywhere in the world.

D

DONE! WHEN YOU FINISH

HELPING YOU TAKE YOUR NEXT STEPS.



Once you have completed your course, there are lots of options for you to consider. If you have successfully completed the first level of your course, then there will be the opportunity to move onto the next level.

If further study isn't for you, then you can start looking for employment in the area that you have been studying.

You might want to do an apprenticeship and earn money while you learn, get on the job training and still come to College one day a week.

If you enjoy College life here then you can stay on and study for a degree with us, go to page 28/29 to find out more. You could go on to university, or take the challenge of a gap year and gain experience travelling and working.

Whatever you chose to do, we have expert careers and guidance at the College to help you make the right decision, see pages 12/13 for details.



ENTRY REQUIREMENTS

TRUST US, WE'LL FIND THE
PERFECT COURSE FOR YOU.

HOW DO I GET ON A COURSE?

Don't worry, there is a course for everyone. Whatever your qualifications, we will match you to a suitable course. We like to treat you as an individual, so we will discuss your career plans on a one-to-one basis. Just fill in the application form in the back of this prospectus. Alternatively come along to one of our Information and Advice events, see page 10 for details.

At our events you will get the opportunity to talk face-to-face with lecturers and career advisers, who will help you make the right decision about your future.

In most career areas we have courses available at all levels. If you successfully complete your course and you are capable of studying at the next level, there are plenty of opportunities for you to progress with us.

ENTRY REQUIREMENTS

Entry requirements vary from course to course and qualifications other than GCSEs may be considered, depending on their suitability, for the course you want to apply for.

For further information regarding individual entry requirements of courses listed in this guide, log on to www.newcollegedurham.ac.uk and download a fact sheet from our Course Finder.

Alternatively fact sheets are available from our main reception area at the College.

YOU CAN CHANGE YOUR MIND

Making the right choice about what course to do is a difficult decision for some people so of course we understand if you change your mind. If you apply for a course at the College then decide you'd prefer to study something completely different, don't worry, please come and talk to us and we can discuss what else the College can offer you.

Vocational Student Profiles

Kate Kearney

Studying - Level 3 Beauty Therapy

Last School Attended - St Bede's Catholic School and Sixth Form College, Lanchester

I was originally interested in studying engineering but all my friends said I would be a great beautician. I heard New College Durham was the best place to study Beauty. The College is bright and colourful and has brilliant grounds in the summer to sit out with your mates and have lunch. Working in the salon is great. It's really busy all the time and there is always something to do. I really like working with clients, putting all of my skills into practice and having the chance to improve my confidence when talking to people.

Dane Bentham

Studying - Level 3 Public Services

Last School Attended - Gilesgate Community Sports College

I decided to go to New College Durham as I wanted a change from school and the college is much different with a more relaxed and friendly atmosphere. The training is really good; the lecturers know their stuff and have loads of industry experience which they pass on to us. There is always loads to do at the college like rock climbing, sports classes and trips away.

Chloe Potts

Studying - Level 1 Hospitality and Catering

Last School Attended - Wolsingham School and Community College

In the future I would like to own and run my own restaurant and my course at New College Durham will help me achieve this. I chose the college because it has a great reputation for helping people with their course but also with their personal skills. I am naturally quite a shy person so working in the restaurant front of house is helping me to improve my confidence and communication skills.



Full-time Courses

2012/13



48	Access to Higher Education
50	Art, Design and Media
54	Business
58	Business and Medical Administration
62	Computing and IT
66	Construction
70	Early Years
74	Engineering
78	Hairdressing and Beauty Therapy
82	Health and Social Care
86	Hospitality and Catering
90	Performing Arts - Music and Drama
94	Public Services
98	Sports Studies
102	Travel and Tourism
106	Steps4Success
107	Pathways (Foundation Learning)

QUALIFICATIONS EXPLAINED

Don't get confused with the different levels and courses, have a look at this handy guide:

Level	Qualifications
1	GCSEs grades D-G, BTEC Level 1 Diploma NVQs Level 1
2	GCSEs grades A*-C, BTEC Level 2 Diploma, NVQs Level 2
3	A Levels, Advanced Extension Awards, AQA Baccalaureate NVQs Level 3, BTEC Level 3 Subsidiary Diploma, Diploma, Extended Diploma

Please note: Course titles may change between now and September 2012 due to changes on the National Qualifications Framework (NQF). Please contact the College for more information.

Access to Higher Education

Level 3 Access to Higher Education

(1 year full-time or 2 years part-time)

The plan: You will follow a course in Study Skills to equip you with the necessary abilities to help your learning. You will choose a pathway from a range of options to give access to the relevant degrees or HND/HNC programme you wish to study. Pathway options are:

- Health
- Science
- Social Sciences and Social Work,
- Teaching
- Combined Studies

This course is recognised throughout the country as an entry qualification for degrees and many professional courses.

Study hours: Full-time students will be required to attend around 16 hours per week, part-time students will be required to attend for 8 hours per week in Year 1 and 9 hours per week in Year 2.

What do I need? Students must be aged 19 years or over at the beginning of this course. You must attend an interview where you will be expected to show commitment, motivation and the ability to cope with the course. Students must also complete an initial assessment in literacy and numeracy.

For those not successfully completing the initial assessment there will be the opportunity to take the Diploma for Progression (a full level 2 qualification). Successful completion of the Diploma for Progression will allow students onto the Access to Higher Education Diploma course in the next academic year.

Art, Design and Media

ART AND DESIGN
GRAPHIC DESIGN
CREATIVE MEDIA PRODUCTION



student JESS BONARIUS
set design inspired by fine art

Unleash your CREATIVE JUICES and grab a career in the field of art, design and media

You could be a photographer, illustrator, film maker, graphic designer, interior designer, product designer, animator, web designer, TV presenter or set designer. Develop the personal skills you'll need for these roles like a creative eye, ability to work to deadlines and under pressure, an attention to detail, good presentation skills, excellent problem solving skills and a dollop of pizzazz then you're onto a winner.

Anything else I need to know?

Yeah, there's shed loads of competitions, exhibitions, fashion shows and the like that you can get involved in. Oh and our graphic design students win lots of national design competitions.

Talented students – our courses are chock full of 'em!

BTEC Level 1 Diploma Art & Design

The plan: You will study a broad range of art and design principles including drawing, painting, photography, fine art, and working in a variety of medias.

What do I need? You need GCSEs at grades D-G. All applicants will be interviewed and will be required to bring a portfolio of artwork.

BTEC Level 2 Diploma Art & Design

The plan: You will study the working design process and an introduction to 2D and 3D design including drawing, painting and printmaking. In addition to this you have a choice of units including graphic design, fashion, textiles, fine art and design crafts.

What do I need? You need GCSEs at grades D-G. All applicants will be interviewed and will be required to bring a portfolio of artwork.

BTEC Level 3 Subsidiary Diploma/Diploma/Extended Diploma Art & Design

The plan: These courses are all practical and work related giving you the opportunity to widen your creative skills and knowledge. In year 1 you will explore units such as design methods, fashion visualisation, multi-disciplinary work, illustration techniques, developing and realising fine art ideas with contextual studies and photography. Progression into year 2 is more specialised and we offer

two pathways - Fine Art or Design which focuses on developing your skills and portfolio work for University and job interviews. *What do I need?* You need a BTEC First Diploma in a related subject (Merit or above); or four GCSEs at grade C or above (Art grade C and above is essential).

BTEC Level 3 Subsidiary Diploma/Diploma/Extended Diploma Graphic Design

The plan: You will explore graphic design, photography, interactive media and 3D design before choosing a specialist route in year 2, if you wish. You will develop practical art and design skills alongside Apple Mac computer skills with the opportunity to work with real clients. You will cover aspects of design including editorial & packaging design, illustration, photography & image editing, branding & advertising, interior design & architecture, transport & product design, animation & web design and computer games design.

What do I need? You need BTEC First Diploma in a related subject; or four GCSEs at grade C or above; or relevant work experience

BTEC Level 2 Diploma Creative Media Production

The plan: You will study the skills and techniques used in the creative media sector. You will learn about exciting job roles including director, producer, editor, camera operator, sound technician and

radio presenter. You will study a broad spectrum of graphic design, print, film and radio production techniques getting the chance to plan, film and edit your own production ideas. There will also be the opportunity to work with industry professionals on live briefs and projects that will be used for actual promotion of products or services. This will provide you with a fantastic opportunity to develop a vocationally relevant CV and progress to our Level 3 courses in Media Production or Graphic Design.

What do I need? You need two GCSEs at grade D or above. One GCSE in either English or Media at C or above would be desirable.

BTEC Level 3 Subsidiary Diploma/Diploma/Extended Diploma Creative Media Production (Television & Film)

The plan: You will study video production (documentary and short films), film and television, photography and radio production (music video and radio production). You will also work with industry professionals on a range of live briefs and produce work for national film competitions.

What do I need? You need four GCSEs at grade C or above (including English).

Business

student ANDY COGGON
set design inspired by business



Want a piece of a *heart*
PUMPING
ADRENALINE FUELLED
 career in Business?

You could be an advertising accounts executive, events manager, economist, wedding planner, human resource officer, marketing manager or project manager.

Find your business sense and develop communication skills, people skills and presentation and negotiation skills as smooth as silk, to be a hit in this industry.

Anything else I need to know?

You will do lots of activities and visit local industries for course related talks and team building exercises.

Edexcel BTEC Level 2 Diploma Business

The plan: You will study six units including Business Purposes, Business Organisations, Financial Forecasting and People in Organisations. You will also complete projects and assignments that are based on realistic workplace situations, activities and demands.

What do I need? BTEC Foundation Certificate in a related subject; or four GCSEs at grades D-G; or related work experience; or other related Level 1 or 2 qualifications.

Edexcel BTEC Level 3 Diploma Business

The plan: You will study 12 units including The Business Environment, Business Resources, Introduction to Marketing and Business Communication. You will also complete projects and assignments that are based on realistic workplace situations, activities and demands.

What do I need? Four GCSEs at grade C or above, or the equivalent (e.g. BTEC Level 2 Diploma).

What can I do at the end of the course?

BTEC L3 Diplomas are valued by employers for entry into higher education (universities and colleges). The Award supports learners in applying for jobs in business-related careers such as accounting, administration, customer service, finance, IT, personnel or sales. Students may progress to university or college to study towards a degree or BTEC Higher National course in Business.

Business and Medical Admin

BUSINESS, ADMINISTRATION & ICT
ADVANCED MEDICAL SECRETARIES

student BILLIE AKENTYERS
set design inspired by medical secretaries

If you're the MASTER of ORGANISATION

try a career in Business and Medical Administration

You could become an administration assistant, accounts clerk, personal assistant, school secretary, medical secretary, hotel receptionist, doctor's surgery receptionist or human resource administrator.

You'll develop skills in communication, assertiveness, working under pressure, working both as part of a team and individually, accuracy and attention to detail, discretion with confidential information, using your own initiative and top notch organisational skills to make sure you're the business.

Anything else I need to know?

We will help bring out the best in you with team building and competitive activities.

NVQ Level 3 Business Administration & ICT

The plan: You will study in-depth how businesses are structured, their environments and the administration services that support their operations, intermediate/advanced keyboard and IT skills and OCR examinations in text and word processing. An external work placement will provide you with experience in a professional environment and will help you gain evidence for your NVQ portfolio.

What do I need? You need NVQ Level 2 Business Administration, or Certificate in Administrative and Secretarial Procedures (CASP); or administrative experience.

All applicants will be interviewed.

NVQ Level 3 Advanced Medical Secretaries

The plan: You will gain an advanced knowledge of the specialist skills and expertise required to work as a secretary or receptionist within the Health Service including general medical and dental practices, hospitals (i.e. ward and medical records) and opticians. You will sit OCR examinations in text and word processing, a City and Guilds Key Skills qualification and the AMSPAR qualification in Medical Terminology. An external work placement will provide you with experience in a professional environment and will help you gain evidence for your NVQ portfolio.

What do I need? You need NVQ Level 2 Medical Secretaries, or relevant experience.

Computing and IT



Fast forward to a career in
**COMPUTING
 & INFORMATION
 TECHNOLOGY**
and all things technical

You could be a computer games developer, IT project manager, network engineer, business systems analyst or IT support technician. Trust us you'll learn to work well under pressure, become an expert problem solver, develop good negotiation and team working skills, oh and of course keep up to date with new developments in this ever changing industry.

Anything else I need to know?

You will have the opportunity to visit local industries for course related talks and team building exercises. Second year students can experience a team building day doing activities such as abseiling and clay pigeon shooting.

Yes, you really can come to college and have fun!

BTEC Level 2 Diploma in IT

The plan: You will study Communication in IT Industry, Working in IT Industry, Computer Graphics, Computer Systems, Database Systems, Spreadsheet Modelling and Website Development. In addition you will study a Functional Skill unit and Interactive Media.

What do I need? You need GNVQ Foundation Level in IT, Engineering or Business; or four GCSEs at grade D or above.

BTEC Level 3 Diploma in IT

The plan: You will study Communications and Employability Skills for IT, Web Production, Database Design, Spreadsheet Modelling, Digital Graphics, Computer Systems, Impact of IT, E Commerce, HCI, Event Driven Programming, Client Side Web, Communication and Technologies, Computer Networks and Information Systems. In addition you will study a Functional Skill unit, Interactive Media and Extended Project (Year 2).

What do I need? BTEC Level 2 Diploma for ICT or four GCSEs at Grade C or above including Maths and English. All applicants will be interviewed.

Con struction

PLUMBING
BRICKWORK
CARPENTRY AND JOINERY
PAINTING AND DECORATING
CONSTRUCTION



student GREG HUGHES
set design inspired by brickwork

Put on your hard hat
and think about a career in
CONSTRUCTION

Did you know that construction is the UK's biggest industry with over 700 different types of jobs and over 2 million employees (how about that 'fact fans')?

You could be a bricklayer, building control officer, civil engineer, construction manager, structural engineer, gas service technician or quantity surveyor. You will become pretty hot on health and safety, develop excellent people and organisational skills, practical skills and a good level of maths.

Anything else I need to know?

Our students are clever so-and-so's and win lots of international construction competitions like UK Plumbing Championships and Skill Build, as well as national awards. One of our plumbing students represented the UK in the World Skills Championships in Calgary, Canada. Our construction tutors will also take you to loads of top notch construction and engineering companies to show you what the not-so-scary world of work is really like.

Level 1 Diploma Brickwork

The plan: You will study identifying and storing resources, basic scaffolding up to 2m, setting out, general and detailed brickwork, slinging and signaling for the movement of loads. You will also study Functional Skills, work to obtain an Abrasive Wheels Certificate and pass a Construction Skills (CS) Computer Based Health & Safety Test.

What do I need? No formal qualifications are required but you need to have a satisfactory standard of English and Maths.

Level 2 Diploma Brickwork

The plan: You will study storing resources, working platforms – this includes low level scaffolding, efficient working, construction of solid and cavity walls and setting out – how to set out buildings to correct standards. You will also be required to pass a practical assessment (phase test) and an online job knowledge test.

What do I need? No formal qualifications are required but a good standard of English and Maths is desirable. All applicants will be interviewed and will undertake initial assessments in literacy, numeracy and practical skills.

Level 3 Diploma Brickwork

The plan: You will study carrying out structural and decorative brickwork, repair and maintenance of masonry structures, erection of complex masonry structures. You will also be required to pass a practical assessment (phase test) and an online job knowledge test.

What do I need? Achievement of Level 2 Diploma in Brickwork, also a good standard of English and Maths is desirable. All applicants will be interviewed and will undertake initial assessments in literacy, numeracy and practical skills

Level 1 Diploma Carpentry & Joinery

The plan: You will study loading and unloading resources, erecting and dismantling working platforms, maintaining working relationships, using power tools, using hand tools, forming basic woodworking joints and health and safety.

What do I need? No formal qualifications are required, but you need to have a satisfactory standard of English and Maths.

Level 2 Diploma Carpentry & Joinery Site Work

The plan: You will study erecting and dismantling basic working platforms, using portable power tools, fixing skirtings, architraves and hinged doors, carcassing before finished works 1 & 2, and using circular saws. You will also study Functional Skills.

What do I need? No formal qualifications are required but a good standard of English and Maths is desirable. All applicants will be interviewed and will undertake initial assessments in literacy, numeracy and practical skills.

Level 1 Diploma Painting & Decorating

The plan: You will study handling and storing materials, using working platforms, protecting working areas, preparing surfaces for decorating and applying decorating materials.

What do I need? No formal qualifications are required but you need to have a satisfactory standard of English and Maths.

Level 2 Diploma Painting & Decorating

The plan: You will study storing materials and equipment, erecting and dismantling work platforms, working efficiently, preparing surfaces for decoration, decorative techniques, applying paints by brush or roller, applying standard wallpapers to surface areas and applying basic specialist paint finishes. You will also study Functional Skills and be required to pass a practical assessment (phase test) and an online job knowledge test.

What do I need? No formal qualifications are required but a good standard of English and Maths is desirable. All applicants will be interviewed and will undertake initial assessments in literacy, numeracy and practical skills.

Level 1 Plumbing

The plan: You will study safety, plumbing processes and systems, how the industry works, and have a basic introduction to self employment within the plumbing and construction industry. You will also study functional skills as part of the course.

What do I need? No formal qualifications are required but GCSEs at grade D are desirable. All applicants will be interviewed and will undertake initial assessments in literacy, numeracy and practical skills.

Level 2 Diploma in Access to Building Services (Plumbing)

The plan: You will study safety, common plumbing processes, domestic cold and hot water systems, sanitation systems, central heating systems, electrical supply and sheet lead weathering.

What do I need? No formal qualifications are required but GCSEs at grade D or above are desirable. All applicants will be interviewed and will undertake initial assessments in literacy, numeracy and practical skills.

BTEC Level 3 Subsidiary/ Diploma/Extended Diploma in Construction/Civil Engineering

The plan: Throughout this technician qualification you will study units such as construction and the built environment, construction technology and design, surveying processes, graphical detailing, mathematics in construction/civil engineering, building technology, construction science and materials, planning, organisation and resources, building surveying, measuring, tendering and estimating, ICT and Computer Aided Design (CAD).

What do I need? Four GCSEs at grades C or above is desirable. All applicants will be interviewed.

Early Years



*student NATASHA LAMB
set design inspired by 'virtual babies'*

Have you got the PASSION & ENTHUSIASM to work with children

Our clever research friends have said that Early Years and Childcare is a fast growing sector and there is demand for staff at all levels. You could be a childcare assistant, nursery nurse, play worker, special needs support worker or social work assistant.

We've been offering childcare courses for fifty years so we're experts at what we do. You need to have a genuine passion for working with children so we can help you to learn how to relate to others, have tact, patience and learn to work as part of a team as well as on your own.

Anything else I need to know?

Our early years students are a generous bunch and are always participating in, or organising fundraising activities for Children in Need & other worthwhile causes. Not only that, they always manage to sweep the board in the College's annual Equality and Diversity competition too.

As an early years student you can take part in many activities like first aid, arts and crafts, trips to Hall Hill Farm and other local places of interest. You can also have a go at using our 'empathy belly' and 'virtual babies', which are programmed to act like a newborn baby. If you're really brave you can enjoy an overnight stay with one of our virtual babies!

We do a full enhanced CRB (Criminal Records Bureau) check on every student but we are sure your record is as clean as a whistle!

You will also need two good references.

CACHE Level 1 Award/Certificate/Diploma in Caring for Children

The plan: This is part of the Foundation Learning Tier, where you will also study a Level 1 Certificate in Personal and Social Development and build on your English skills. You will study a variety of topics including play, listening and talking to children, safety and hygiene and healthy eating. There will also be an opportunity for a practical work placement.

What do I need? A good range of GCSEs at grades D-G.

CACHE Level 2 Certificate for the Children and Young People's Workforce

The plan: You will study a variety of units covering topics including child development, health and safety, safeguarding and positive environments. This is a one year certificate course where you will develop a good understanding of the skills required to care for children. You will also undertake practical work placements where you will demonstrate and be assessed on your skills when working with and supporting children. This course will give you a vocational qualification to work with children under supervision.

What do I need? Two GCSEs grade C or above (including English Language); or a pass at Diploma level from the CACHE Level 1 Award/ Certificate/Diploma in Caring for Children including a pass placement report.

CACHE Level 3 Diploma for the Children and Young People's Workforce

The plan: You will study a variety of mandatory and optional units covering topics such as child development, health and safety, safeguarding and positive environments. This is a diploma course in childcare where you will develop an in- depth understanding of the skills required to care for children. You will also undertake practical work placements where you will demonstrate and be assessed on your skills when working with and supporting children. This Diploma will give you a vocational qualification to work with children 0-5 years.

What do I need? The minimum requirement will be five GCSEs grade C or above (including English Language and Maths.); or successful completion of the Level 2 Diploma in Childcare & Education at grades A*-B

Engineering

ELECTRICAL/ELECTRONIC ENGINEERING
MECHANICAL ENGINEERING
MOTOR VEHICLE
PERFORMING ENGINEERING OPERATIONS

student SEAN BURROWS
set design inspired by electrical engineering



UP POWER

for a career in Engineering

You could be an engineering operative, electronics engineering technician, engineering maintenance fitter, engineering craft machinist, mechanical engineering technician, motor vehicle fitter, motor vehicle breakdown engineer or motor vehicle technician.

Engineers are practical problem solving practitioners (try saying that a few times!) and they work in medicine, entertainment, space exploration and environmental management. To start with, you will need to have a decent level of fitness, good maths, science and technology skills. By the end of the course you will have pretty hot communication and problem solving skills, able to work well in a team and on your own and have really, really good practical skills.

Anything else I need to know?

You'll go on industry visits where you can mix with potential employers and try outdoor pursuit activities like paintballing. You'll also get to go to the Automotive Trade Show, which normally takes place at the NEC in Birmingham.

See, it's not all hard work!

EAL Level 3 Diploma in Electrical and Electronic Engineering Technology (QCF)

The plan: You will study engineering and environmental health and safety, engineering organisational efficiency and improvement, electrical and electronic principles, electrical testing and commissioning, electrical maintenance in buildings, installation of electrical equipment, panel wiring for engineering applications and electrical power for engineering applications.

What do I need? You need at least four GCSEs at grade C or above (including Maths and English); or equivalent qualifications such as GNVQ Intermediate or BTEC First Certificate/Diploma. Mature individuals may gain exceptional entry with relevant experience.

BTEC Level 3 Diploma Electrical/Electronic Engineering

The plan: You will study health and safety in the engineering workplace, mathematics for engineering technicians, electrical & electronic principles, principles and applications of electronic devices and circuits, engineering drawing for technicians, communications for engineering technicians, engineering project, principles and operation of three-phase systems, further mathematics for engineering technicians, further electrical principles, mechanical principles and applications.

What do I need? You need at least four GCSEs at grade C or above (including Maths, English and Science); or equivalent qualifications such as GNVQ Intermediate or BTEC First Certificate/Diploma (distinction grade). Mature individuals may gain entry with exceptional relevant experience.

BTEC Level 3 Diploma Mechanical Engineering

The plan: You will study health and safety in the engineering workplace, mathematics for engineering technicians, communications for engineering technicians, engineering materials, engineering drawing for technicians, an engineering project, further mathematics for engineering technicians, electrical principles, mechanical principles and applications, mechanical measurement, fabrication processes.

What do I need? You need at least four GCSEs at grade C or above (including Maths, English and Science); or equivalent qualifications such as GNVQ Intermediate or BTEC First Certificate/Diploma (distinction grade). Mature individuals may gain entry with exceptional relevant experience.

Entry Level/Level 1/Level 2 Motor Vehicle Service & Repair

The plan: You will study health and safety with good housekeeping in the workplace, basic routine maintenance, using and interpreting technical information, removing and refitting components, vehicle systems, fault diagnosis, maintain positive working relationships and routine vehicle maintenance.

What do I need? No formal qualifications are required but you need to have a satisfactory standard of English and Maths. All applicants will be interviewed and will undertake initial assessments in literacy, numeracy and practical skills.

Level 3 Diploma in Light Vehicle Maintenance and Repair Principles

The plan: You will study the overhauling and diagnostics of vehicle systems including engines, steering, transmission, suspension, brakes and electrics. This course will help you learn, develop and practise the skills required for you to progress onto a work based qualification such as an apprenticeship or work in the Automotive Sector.

What do I need? Ideally you need to have experience in the motor vehicle industry or have completed a Level 2 Qualification in motor vehicle studies. Mature individuals may gain exceptional entry with relevant experience.

NVQ Level 1 Certificate in Performing Engineering Operations (Fabrication & Welding)

The plan: You will study working safely in an engineering environment, working efficiently and effectively in engineering, using and communicating technical information, using manual MIG or MAG welding equipment and carrying out sheet metal cutting, forming and assembly activities.

What do I need? No formal qualifications are required but you need to have a satisfactory standard of English and Maths. All applicants will be interviewed and will undertake initial assessments in literacy, numeracy and practical skills.

NVQ Level 2 Diploma in Performing Engineering Operations (QCF) (Electrical Installation & Mechanical)

The plan: As part of the combined program you will study working safely in an engineering environment, working efficiently and effectively in engineering, using and communicating technical information, general fitting, machining and assembly applications, wiring and testing electrical equipment and circuits, forming and assembling electrical cable enclosures and support systems, and assembling and testing electronic circuits.

What do I need? You need GCSEs grade D or above in Maths, English and a Science; or an appropriate Level 1 course in Engineering. All applicants will be interviewed and will undertake initial assessments in literacy, numeracy and practical skills.

Hairdressing and Beauty Therapy



student EYV KIRTLEY
set design inspired by a night at the theatre

Can you CUT IT as a Hairdresser or Beauty Therapist?

You could be a stylist, technician, beauty therapist or even go freelance. If this is your plan then you'll need to develop good communication and people skills, creativity and practical skills, learn how to listen and communicate well, have a high standard of personal care and enough stamina to stand on your feet for most of the day – trust us it's not that easy!

Anything else I need to know?

Go head to head with other students at the region's hottest hair & beauty competition; the Association of Hairdressers and Therapists' (AHT) Hair and Beauty Trainee Competition.

Oh yes, and you will also gain industry experience in our very own commercial hair and beauty salon Halo. Meet the Professionals in our industry that will advise and discuss career opportunities available; Steiner Cruise Ships, Wella & Serenity Spa.

Level 1 NVQ Diploma in Hairdressing and Beauty Therapy

The plan: You will study health and safety, contribute to the development of effective working relationships, shampooing and condition the hair, plaiting and twisting the hair, preparing the work area, make-up, nail art and one Functional Skill in English. You will also assist with reception, hair colouring and perming and facial skin care treatments.

What do I need? No formal qualifications are required but all applicants are interviewed and must have good communication skills and a desire for working in the hairdressing or beauty industry.

Level 1 Diploma (Hairdressing)

An Introduction to the Hair and Beauty Industry
The Foundation Learning programme consists of vocational study, personal and social development and one Functional Skill in English.

The plan: You will study health and safety, working with others, shampoo and conditioning hair, assist with colouring services, face painting, plaiting and twisting, create an image, and additional units at Level 2 in the art of styling hair and colouring hair.

What do I need? No formal qualifications are required but all applicants are interviewed and must have good communication skills and a desire for working in the hairdressing or beauty industry.

Level 2 NVQ/VRQ Diploma in Hairdressing

The plan: You will study health and safety, cutting hair using basic techniques, shampoo and condition hair and scalp, style and dress hair, finish hair including blow-drying and setting, change hair colour using basic techniques, promotion of additional products and services, advise and consult with clients, work on reception and give clients a positive impression.

What do I need? No formal qualifications are required but all applicants are interviewed and must have good communication skills and a desire for working in the hairdressing industry.

Level 3 NVQ Diploma in Hairdressing

The plan: You will study colour correction services, provide hairdressing consultation services, promote additional products, develop and enhance your creative skills, style and dress long hair, create a variety of looks using a combination of cutting techniques and colour hair using a variety of techniques.

What do I need? You need Hairdressing Level 2 NVQ (or equivalent).

Level 1 Diploma (Beauty Therapy)

An Introduction to the Hair and Beauty Industry
The Foundation Learning programme consists of vocational study, personal and social development and one Functional Skill in English.

The plan: You will study professional ethics, health and safety, working with others, basic facial cleansing, make-up, manicure, pedicure, face painting and develop and maintain your effectiveness at work. You will also study an additional unit at Level 2 in the art of photographic make-up and nail art.

What do I need? No formal qualifications are required but all applicants are interviewed and must have good communication skills and a desire for working in the hairdressing or beauty industry.

Level 2 NVQ Diploma in Beauty Therapy

The plan: You will study professional ethics, health and safety, facial massage and skin care, how to apply and offer instruction on make-up, how to provide eyelash and eyebrow treatments, how to provide and advise on nail care, wax depilation, reception duties, promote additional products and services and develop and maintain your effectiveness at work.

What do I need? No formal qualifications are required but three GCSEs at grade C or above are desirable.

Level 3 NVQ Diploma in Beauty Therapy

The plan: You will study aspects of health and safety, client consultation, advanced face and body electrical treatments, body massage, aromatherapy, electrical epilation, promote additional products and services and contribute to the financial effectiveness of the business.

What do I need? You need Beauty Therapy Level 2 NVQ (or equivalent).

Health and Social Care

student FIONA WISEMAN
set design inspired by anatomy & physiology
for Health and Social Care



Get involved in

HELPING PEOPLE

to live their lives

Health and Social Care jobs have one important thing in common; they all support aspects of daily life and help people cope with ill health. If you want a rewarding career that is hard work and interesting, then look no further. Of course you will also have to be of the highest integrity (that's being very honest to you and me).

So have you got the personality and the passion to help others? You could be a personal assistant, a home care worker or community worker. You could choose to work with older people, people with disabilities, people who use mental health services or families and young people.

Anything else I need to know?

As a Health and Social Care student you can do lots of course related activities and trips. Oh and another thing; we do a full enhanced CRB (Criminal Records Bureau) check on every student, but we are sure your record is as clean as a whistle!

You will also need two good references.

Level 1 Diploma Health & Social Care

The plan: You will study units based around developing skills in health and social care, employment and dealing with people in different health and social care settings. Work placement will usually be part of the course, as are Functional Skills and a Personal and Social Development Certificate.

What do I need? No formal qualifications are required but you should have a number of GCSEs at grades E-G.

Level 2 Diploma Health & Social Care

The plan: You will study health and social care units such as care practice, lifespan development, physical care and values and interpersonal skills. Work placement will be part of the course, as are Functional Skills.

What do I need? You need two GCSEs at grade C or above (or predominantly D grades)

Level 3 Health & Social Care

The plan: You will study core units and specialist units based on subjects such as communication, equality, values, personal development, sociology and psychology. Work experience, Functional Skills and additional related qualifications are an essential part of the course. This qualification provides a stepping stone into a range of foundation and degree courses or employment in the care sector at support level.

What do I need? You need five GCSEs at grade C or above from a range of academic subjects (including English Language and Maths).

Hospitality and Catering

HOSPITALITY AND CATERING
PROFESSIONAL COOKERY
HOSPITALITY AND SUPERVISION

student JAMIE HALL
set design inspired by professional cookery



Do you fancy COOKING UP a storm in the kitchen?

Then let us serve you up a tasty career in hospitality and catering. You could be a restaurant manager, housekeeper, waiting staff, kitchen assistant or you could start as a commis chef and become a head or executive head chef. Get you!

You will learn to work well in a team, develop your creative flair through competition work, communication and leadership skills, ability to multi-task and become highly motivated.

Anything else I need to know?

Yes! You will work in our very professional kitchen and restaurant where you will get hands on experience in preparing and serving food for a range of different functions. You will also go on work placement with Aramark (our catering contractors) or out in the industry. Our friends in high places say that there's a shortage of skilled staff in this industry and employers are demanding a higher calibre of staff.

So let's get started!

NVQ Level 1 Hospitality & Catering

The plan: You will study the basic craft skills and knowledge required for employment in the hospitality, food, leisure, travel, tourism and health care industries including food and drink service, food preparation and cooking, preparing and serving food, plus Level 2 Food Safety qualification.

What do I need? No formal qualifications are required.

NVQ Level 2 Professional Cookery

The plan: You will study the basic craft skills and knowledge required for employment in the hospitality, food, leisure, travel, tourism and health care industries including bar service, food and drink service, food preparation and cooking, hospitality service, quick service and reception, plus Level 2 Food Safety qualification.

What do I need? You need City and Guilds 706/1 or 705; or NVQ Level 1 Food Preparation, Food Service or equivalent; or two years relevant industrial experience in catering.

NVQ Level 3 Professional Cookery

The plan: You will develop flair, creativity and a flexible approach to meet the changing needs of the industry. You will study food preparation and cooking (kitchen and larder), food preparation and cooking (pastry and confectionery) and hospitality supervision.

What do I need? You need City and Guilds 706/2; or NVQ Level 2 Professional Cookery or equivalent; or two years relevant industrial experience in catering.

NVQ Diploma Level 3 Hospitality Supervision & Leadership

The plan: You will study and get hands on experience with the supervision of hospitality staff (front of house) and restaurant, food and drink service, food service advanced craft planning, running events and stock control.

What do I need? You need City and Guilds 706/2, 707/2, 705/2; or NVQ Level 2 Food Preparation, Food Service or equivalent; or two years relevant industrial experience in catering.

Performing Arts

ACTING
MUSIC



student JAMES MANNING
set design performing arts

Have you GOT WHAT IT TAKES? for a career in the performing arts?

If you can hit the high notes, are serious about music or acting, or just have an unashamed love for all things theatrical, then a career in the performing arts is for you. Follow the red carpet route of performing arts acting and you could be an actor, choreographer, lighting technician or stage manager. If music is your thing then you could be a musician, music teacher, music journalist, sound engineer or be involved in production, promotion or management.

Our friends in the know say that music is a major industry employing more than 130,000 people full-time in the UK alone. If you are very dedicated and resilient and have a bucket load of talent then we'll help you to have the ability to accept criticism and direction and work well within a group.

Anything else I need to know?

You'll have loads of opportunities to finely tune your skills as you'll be involved in plays, live music theatre performances and dance pieces. They will be staged at our very own venue in the College and the Gala Theatre in Durham. We have specialist tutors in singing and choreography to help you along the way. You'll also be visiting the theatre and going to professional productions. What's not to love? As music students you will be involved in lots of live concerts and performances both at the College and the Gala Theatre, Durham with top notch facilities like individual practice rooms, ensemble rooms to prepare for gigs and a MIDI suite with specialist software recording equipment. You will also get individual tuition in your specialist instrument. So, you have loads of opportunities to perfect your talent before you go off into the big wide world and become really famous - well someone's got to do it!

BTEC Level 2 Diploma Performing Arts (Acting)

The plan: You will study acting, production process, the performing arts industry and devising plays.

What do I need? All applicants will attend an interview/audition to demonstrate performance ability and suitability.

BTEC Level 3 Subsidiary Diploma/Diploma/Extended Diploma Performing Arts (Acting)

The plan: You will study the historical context of performance, performance workshops, performing arts business, rehearsing, performing, principles of acting, applying acting styles, musical theatre performance, singing, vocal skills, movement skills, theatre-in-education, devising theatre, physical theatre, theatre for children and contemporary theatre performance. There are opportunities to add a range of additional qualifications including London College of Music (LCM) grades in music theatre.

What do I need? You need First Diploma in Performing Arts (with appropriate level of attainment); or four GCSEs at grade C or above (if you have GCSE Drama we would expect a grade C or above). All applicants will attend an audition/ interview and group workshop session. Exceptional entry is available to applicants of all ages with suitable experience and ability.

BTEC Level 2 Diploma Music

The plan: You will study music theory, music performing skills, aspects of the music industry and how to plan music projects such as live performances and promoting recordings. There are opportunities for additional qualifications including grades in practical music and music theory.

What do I need? All applicants will attend an audition/interview to demonstrate their performance ability and suitability.

BTEC Level 3 Subsidiary Diploma/Diploma/ Extended Diploma Music (Performing)

The plan: You will study theoretical and academic units such as the music industry, aural perception skills, music theory and harmony, songwriting and musical arranging. You will study practical units that include rehearsing for and performing in live shows, as well as improvising, session musician techniques and keyboard skills. You will also be taught music technology in the form of a MIDI sequencing unit in the first year, and a recording and production unit in the second year.

What do I need? You need four GCSEs at grade C or above. All applicants will need to successfully pass an audition on their main instrument or voice which will test their practical abilities in a range of skills. Exceptional entry may be given to mature students who have previous experience as working musicians.

students CALLUM KNIGHT & DANE BENTHAM
set design inspired by emergency response

UNIFORMED SERVICES
PUBLIC SERVICES

Public Services



Does being part of the frontline in one of the public services get your

PULSE RACING!

Be part of the Royal Navy, Army, Royal Air Force, Police, Prison Service or Fire and Rescue Service.

We will help you to develop lots of special qualities including being able to react quickly and take positive action, remain calm, have a good level of fitness, be firm and tactful, use your own initiative and of course have lots of self discipline.

Anything else I need to know?

There are lots adrenaline-fuelled activities that may be available to you as a public services student including police training role-plays, prison dog training, major incident exercises, teamwork & skill development exercises along with residential trips like overseas skiing, army look at life and adventure training.

NCFE Certificate for Entry to Uniformed Services Level 1

The plan: You will study investigating work opportunities, teamwork, map reading & navigation, physical fitness, adventurous activities, health, safety & emergency care, self discipline, the development and assessment of Functional Skills in communication, application of number and information technology. Additional qualifications may include health & safety, first aid and personal development for the outdoor industry.

What do I need? No formal qualifications are required but GCSEs at grades D-G; or some experience in a relevant working environment is desirable.

BTEC Level 2 Diploma Public Services

The plan: You will study employment in the uniformed public services, public service skills, improving health & fitness, land navigation by map and compass, driving and the public services, sport & recreation, adventurous activities & teamwork for the public services and the development and assessment of Functional Skills in communication and numeracy. Additional qualifications may include first aid.

What do I need? Four GCSEs at grade D; or a Foundation GNVQ is desirable.

BTEC Level 3 Diploma/Extended Diploma Public Services

The plan: You will study government policies and the public services, leadership & teamwork, citizenship & diversity, career planning, employment in the uniformed public services, land navigation by map & compass, understanding discipline, responding to emergency service incidents, planning & management of major incidents, current & media affairs, practical team sports, fitness testing & training in the uniformed services, skills for land based outdoor & adventurous activities, extended research in the public services, command & control in the uniformed public services and the development and assessment of Functional Skills in communication, application of number and information technology. Additional qualifications may include first aid.

What do I need? For the Level 3 Diploma a minimum of five GCSEs at grade C or above (including English and Maths), or equivalent is required. For example, the BTEC Level 2 Diploma in Public Services may be accepted at a Merit/Distinction level with an appropriate qualification in English. Mature applicants will be interviewed

What do I need? Places on the Level 3 Extended Diploma are subject to minimum grade requirements of seven GCSEs at A-C including English, Maths and Science or equivalent such as BTEC Level 2 Diploma in Public Services at a distinction level as well as BKSB assessments in English and Maths and free writing exercises, to be held during the induction period.

Sport Studies

SPORT
SPORT AND ACTIVE LEISURE

student RICHARD ELMES
set design football academy



Get a piece of the ACTION with a career in sport

You could be a sports development officer, leisure centre manager, fitness instructor, sports coach, personal trainer, outdoor activities instructor, sport and exercise psychologist, sport and exercise scientist or if you're really good, a sports professional.

You will need to be very passionate about sport and healthy living. You'll develop excellent communication skills, leadership and organisational skills, self motivation, and top dollar project management skills.

Anything else I need to know?

On Wednesday afternoons you can take part in over 15 sport activities but we'd expect nothing less from our sport students! If you've got a talent for playing the beautiful game, you can go for trials at our fantastic Football Development Centre and get weekly professional coaching. You could also represent the College in the British Colleges Sport (BCS) and Centres of Football Excellence League (ECFA).

Sports Foundation BTEC Level 1 Diploma Sport and Active Leisure

The plan: You will study health and safety, time management, teamwork, taking part in sport, planning your own fitness programme, and job opportunities in sport and active leisure.

What do I need? No formal qualifications are required but all applicants are interviewed and must have an interest in working in the sport and active leisure industry.

BTEC Level 2 Diploma Sport

The plan: You will study fitness testing and training, practical sport, anatomy and physiology for sport, injury in sport and technical skills and tactical awareness in sport. This will provide you with the knowledge, understanding and skills to move on to the BTEC Level 3 in Sport or seek employment in the sport sector at a junior level.

What do I need? Four GCSEs at grade D or above, including English (or equivalent).

Active IQ L2 Diploma Sport and Active Leisure

The plan: You will study a range of vocational and knowledge based units including circuit training, gym based exercise, health and safety, sports hall operations and anatomy and physiology. This qualification will provide you with the skills to become a sport and recreation assistant, activity leader or fitness instructor.

What do I need? GCSE in a sport related subject grade D or above

BTEC Level 3 Diploma/Extended Diploma Sport (Performance and Excellence)

The plan: This course gives learners the knowledge, understanding and skills that they need to prepare for employment or for higher education, degree and professional development programmes. You will study a number of core modules such as fitness training and programming, fitness testing for sport and exercise, sports nutrition, assessing risk in sport, principles of anatomy and physiology, physiology of fitness, psychology for sports performance, technical and tactical skills in sport and the athlete's lifestyle. Additional units will also be selected for you and will include sports coaching, current issues in sport, analysis of sports performance, sports injuries, instructing physical activity and exercise, leadership in sport, practical team sports, practical individual sports and exercise, health and lifestyle. Additional compulsory qualifications may include first aid, NCFE Nutrition and Functional Skills (Communication and Numeracy).

What do I need? For the **Level 3 Diploma** a minimum of five GCSEs at grade C or above (including English and preferably Science), or equivalent is required. Mature applicants will be interviewed.

What do I need? Places on the **Level 3 Extended Diploma** are subject to a minimum grade requirement of seven GCSEs at A-C including English, Maths and Science or equivalent such as BTEC Level 2 Diploma in Sport at a distinction level as well as BKSB assessments in English and Maths and free writing exercises, to be held during the induction period.

Travel and Tourism

TRAVEL AND TOURISM
TRAVEL INDUSTRY SKILLS (TIS)



students REBECCA KENNEDY/
LOUISE HUTCHINSON/
DEMI TOPPING
set design inspired by air cabin crew

WORLD

Open up a
of career opportunities
with Travel and Tourism

You could be a travel agent, tourist information centre assistant, resort representative, tour manager, flight attendant, hotel manager or events manager.

You will develop strong communication skills, good organisational skills, team working skills, problem solving skills, work well under pressure and learn how to use your own initiative (that's 'thinking for yourself to me and you!).

Anything else I need to know?

You will have a chance to take part in many visits and activities including trips to London, Blackpool, Manchester and many more. You will get work experience in our very own travel agency, Global Travel, and you can experience our aircraft cabin which is a replica of an aeroplane interior. The cabin has overhead storage boxes and aeroplane seating – in fact everything you would expect on a real plane, except a pilot!

BTEC L1 Diploma in Travel & Tourism

The plan: You will study employability and social development. NCFE developing skills for the workplace.

What do I need? GCSEs at grades D-G; or an entry level qualification is desirable.

BTEC Level 2 Diploma Travel & Tourism

The plan: You will study the UK travel and tourism industry, explore customer service, marketing in travel and tourism, UK travel and tourism destinations, European holiday destinations and plan visits for travel and tourism.

What do I need? You need five GCSEs (or equivalent) at grade D or above (including English and Maths); or a BTEC Introductory Diploma Level 1 at Merit or above. Exceptional entry may be given to mature individuals with relevant experience.

BTEC Level 3 Diploma Travel & Tourism

The plan: Some of the units you will study include investigating the travel and tourism sector, customer service, marketing products and services, the business of travel and tourism, European destinations and entertainment for holidaymakers. Additional qualifications include NCFE Cabin Crew and NCFE Award for Resort Representatives.

What do I need? You need five GCSEs (or equivalent) at grade C or above (including English Language and Maths); or a BTEC First Diploma Level 2 (Merit or above). Exceptional entry may be given to mature individuals with relevant experience.

Travel Industry Skills (TIS)

The plan: You will work towards the following qualifications BTEC Level 2 Certificate in Travel and Tourism Services, NCFE Level 2 Certificate in Air Cabin Crew, NCFE Award for Resort Representatives, NCFE Developing Skills, NCFE Level 2 Certificate in Travel.

What do I need? You need five GCSEs at grade D or above; a relevant Level 2 qualification; or relevant experience.

Steps4 Success

STEPS4SUCCESS PATHWAYS (FOUNDATION LEARNING)

What's going on?

Aged 16-18 and not sure what to do with your life?
Need some inspiration or maybe just a point in the right direction?

If you're not already in education, employment or training then maybe our Steps4Success programme could help you get on the right track.

You will get to try out a number of subject areas so you can decide what you most enjoy and what you don't. We'll make sure you're thinking along the right lines, with the right skills and attitude to get where you want to be.

You'll soon get the hang of college life, with the chance to experience a whole range of fun social and sporting activities. You'll also brush up on skills for work such as health and safety training, environmental projects and work placements, not to mention working towards Functional Skills in ICT, Maths or English.

By the time you finish, you'll be geared up for your next step, whether that's progressing onto a full time College course or applying for your ideal job.

Pathways

(FOUNDATION LEARNING)

Great stuff...

If you are due to leave school, need additional learning support and don't yet feel ready to join a mainstream college course, come and join our Pathways programme. We'll help you take your numeracy, literacy and IT skills to the next level and you can try some of our College courses such as catering, hairdressing, beauty therapy, painting and decorating, motor vehicle and performing arts. You will work towards qualifications in Employability and Personal Development and the new Functional skills qualifications in Maths, English or ICT. You may also have the chance to gain work experience with a local employer.

For more information contact the Learning Support Office on 0191 375 4380.

Sixth Form Centre

2012/13



We look forward to welcoming you to our Sixth Form Centre, where we can offer you a wide range of subjects, excellent teaching and support along with a fantastic reputation for success.

- | | | | |
|-----|------------------------------------|-----|-------------------------|
| 110 | A great big welcome | 140 | Environmental Studies |
| 112 | A pass rate of 100% | 142 | Ethics and Philosophy |
| 114 | Stepping up to Higher Education | 144 | Extended Project |
| 116 | Very important dates | 146 | Film Studies |
| 118 | Sixth Form Centre student profiles | 148 | Geography |
| 120 | GCSEs & Mixed Study | 150 | Government and Politics |
| 122 | AQA Baccalaureate | 152 | History |
| 124 | Applied Science | 154 | Human Biology |
| 126 | Art and Design | 156 | Law |
| 128 | Biology | 158 | Mathematics |
| 130 | Business Studies | 160 | Physics |
| 132 | Chemistry | 162 | Psychology |
| 134 | Critical Thinking | 164 | Science in Society |
| 136 | English Language | 166 | Sociology |
| 138 | English Literature | | |

A great big welcome

Come and join us for an outstanding future. We look forward to welcoming you to our School of Sixth Form Studies, where we can offer you a wide range of subjects, excellent teaching and support along with a fantastic reputation for success.

SUPPORTING YOU ALL THE WAY

At New College Durham we are committed to helping you achieve on your course. We have an extensive range of support available including:

- dedicated subject specialist staff, many of whom are examiners
- supportive peers, Student Reps are trained to offer advice and guidance
- extensive overall College support.

WE INVEST IN YOU

Our team of expert teaching staff work one to one with you during the induction week to ensure that the AS/A2 programme you choose meets your long term ambition. Supportive tutorials and a personal tracking programme help to nurture your talents and exceed your expectations. Our 4 AS level programme will provide you with the academic skills essential to succeed at Higher Education and/or in the workplace. At both AS and A2 level you will benefit from subject specific workshops that are specifically targeted at improving your examination performance. As part of our commitment to develop independent study skills that are prized by universities we have introduced the Extended Project Qualification at A2 level.

WIDENING YOUR EXPERIENCE

We recognise the importance of a rounded education therefore our enrichment programme offers you the opportunity for you to develop a range of skills in addition to those embedded in your main programme.

We encourage you to consider social, cultural and moral issues, to get involved by organising and running events to raise money for charities chosen by you. We have good working relationships with the universities and students attend a number of lectures and workshops at Newcastle and Durham University campuses.

The School of Sixth Form Studies has an active student body. Both our AS and A2 students support staff during Information and Advice events and promote the many positive experiences to prospective students. We also have a Student Committee that the Head of School chairs. These monthly meetings are with the elected representatives of AS and A2 year students to discuss and review the learning experience. We value the opinions of our learners.

A pass rate of 100%

In 17 subjects at A2.
The results speak for themselves.



Results in 2011 were excellent with the overall pass rate for A Levels at 99%. We achieved 100% pass rate in 17 out of 19 subjects. This is in line with our high achievements in previous years and is well above the national average. This achievement is the result of the outstanding teaching of our experienced subject staff - many of whom are also

national examiners; the very good personal and academic support they provide; and most importantly, the commitment and hard work of our students. Our students have gone on to achieve great success and have progressed to university, or their chosen career.

Stepping up to Higher Education

LIFE AFTER A LEVELS

The Sixth Form Centre encourages applications for higher education study. Every year, a significant proportion of our A Level students progress into higher education. Courses cover a wide range of subjects with students studying at New College Durham and various universities including: Northumbria, Newcastle, Sunderland, Durham and Teesside. Some students travel further afield to universities throughout the country.

Some students choose to stay with us for higher education. New College Durham offers a wide range of full and part-time higher education programmes and professional qualifications including foundation degrees, honours degrees, Higher National Certificates (HNCs) and Higher National Diplomas (HNDs).

The Sixth Form Centre participates in the Partners Programme with Newcastle University. Through this Programme students who apply to Newcastle University and have the required predicted A Level grades will receive a conditional offer of a place on their chosen course. In addition, eligible students have the opportunity to participate in an Assessed Summer School and receive a lower conditional offer.

The Sixth Form Centre also supports students on the Gateway to Medicine programme run by Durham University and Newcastle University, which offers eligible students a lower conditional offer to study medicine.

Durham University's Compact Scheme supports progression for talented year 12 students in County Durham, who would benefit from additional help and support. Students take part in a two year structured programme of events, including an assessed summer school in year 12.

A TASTE OF UNIVERSITY LIFE

ASC (Advice Support Careers) has links with local universities who inform the College of any higher education events taking place locally. ASC distribute this information across the College and can arrange for visits to university open days, taster days, higher education conventions and careers fairs. Some students also participate in activities organised by local universities, such as Evolve which is an Introduction to University Life. For example previous students have participated on residential courses at Durham University as part of a science industry project week plus conferences and residential courses at the Universities of Oxford and Cambridge. ASC can also find out information about university events taking place out of the local area upon a student's request.

Very important dates

Plan your next move.

WE'D LOVE TO MEET YOU

Come and get to know us at one of our Information and Advice events.

You can find out all you need to know by chatting face-to-face with our specialist tutors or our impartial careers advisers and having a tour of our fantastic campus. Bring along your friends and family too.

Events take place on the first Tuesday of every month (except January, April, June and August) between 5.00pm and 7.00pm.

Tuesday 4 October 2011
 Tuesday 1 November 2011
 Tuesday 6 December 2011
 Tuesday 10 January 2012
 Tuesday 7 February 2012
 Tuesday 6 March 2012
 Tuesday 27 March 2012
 Tuesday 1 May 2012
 Tuesday 12 June 2012
 Tuesday 3 July 2012

FAMILY FUN DAY

SATURDAY 19 NOVEMBER 10AM - 3PM

Get involved in loads of fun activities and taster sessions at our free family fun day. While you're here you can find out what's on offer at the college, get advice on any subject for any level and even apply for one of our programmes.

Please check out our website for other specialist open days throughout the year.

JUNE

A LEVEL TASTER DAY

This offers you the opportunity to sample a range of subjects at advanced level and may help you to make your subject choices. For more information regarding June 2012 A Level taster day arrangements, please telephone the Sixth Form Centre Administrator on 0191 375 4304/4311.

AUGUST

GCSE RESULTS DAY ONWARDS

The College is open every day for two weeks (except Bank Holidays) following GCSE results day offering information, advice and support for students.

AUGUST

A LEVEL RESULTS DAY

A telephone information and advice service is available for students wishing to apply for higher education courses at the College following A Level results.

SEPTEMBER

WELCOME WEEK

If you apply for a course you will be invited to attend College to begin your induction process, enrol, work with your tutor, tour the College, see the facilities, meet new friends and prepare for the next step in your learning experience.

Sixth Form Centre Student Profiles

Ola Smucklerz

Studying - AQA Baccalaureate:

AS Art and Design, AS Business, AS Law and AS Psychology

Previous School - St Leonard's Catholic School

I was looking for a college that would give me the opportunity to try loads of different subjects. The atmosphere is great, everyone is really friendly which means coming to college is a lot of fun. I like challenging myself and studying the AQA Baccalaureate is a great way for me to do this. The combination of subjects along with volunteer work and additional programmes helps build up my application for university.

Tom Crosby

Studying - AS History, AS Law and AS Sociology

Previous School - Tudhoe Grange School

The campus was one of the main draws for me, I like the modern buildings and the bright interiors. The tutors are really approachable, it's often like talking to your friends. Studying different subjects has given me chance to discover what I want to do after college. I hope to go to university and study Politics.

Imogen Rush

Studying - AS Ethics and Philosophy, AS Law and AS Psychology

Previous School - Framwellgate School

I wanted to go to a college that was friendly and tolerant and New College Durham has a relaxed and chilled environment. The atmosphere created by the tutors is great, they are really friendly and easy to talk to. Once I have finished college I would like to study at university to be a youth worker.





GCSEs AND MIXED STUDY

STUDY FOR 5 GCSES

We provide students with the opportunity to study GCSE English Language, GCSE Mathematics, GCSE Science (single award), GCSE Sociology, GCSE Ethics and Philosophy and a short course in Citizenship.

Completed in one year, this full time programme is designed to allow you to gain the five GCSEs you need to progress to one of our many level 3 programmes, including our A Level and Vocational courses.

MIXED STUDY - A LEVELS AND GCSES

Students without a grade C or above in GCSE English Language or Mathematics can complete these qualifications whilst working towards their chosen AS Levels. Studied in the AS year, this approach provides the opportunity to gain a GCSE and broaden your knowledge base.

This flexibility continues at A2 Level where you can take additional AS subjects alongside your A2 programme, thus increasing your knowledge, skills, employability and application to university.

Students without GCSE English or Mathematics at grade C or above are encouraged to take these in conjunction with your chosen programme of AS Level subjects.



AQA BACCALAUREATE

The AQA Baccalaureate is a prized asset for entry into higher education and all professional qualifications.

The AQA Baccalaureate course has four elements that demonstrate you have achieved success, not only in terms of your A Levels, but also success in wider learning and enrichment activities.

The course consists of:

1. Studying three A Levels over two years. There is complete flexibility of choice from our range of full A Levels.
2. Committing 100 hours towards enrichment in the first year of your course in at least two of the following three areas:
 - work related learning, including work experience/work shadowing
 - community participation, such as voluntary work or charitable work
 - personal development activities, for example sport, forensic science.
3. Critical Thinking or Science in Society, (at AS Level) taken in the second year of your course.
4. An Extended Project, completed in the second year.

The extended project involves the submission of a written report of between 1000 and 5000 words usually linked to an area of academic interest.

Success at the AQA Baccalaureate demonstrates the skills and personal qualities that employers and universities are most interested in. That is breadth of experience, independent learning, self management and more rounded individuals.

You will need to have achieved at least seven GCSEs at grades A* to B (including Maths and English) before starting this course.

The Baccalaureate programme is subject to change.



APPLIED SCIENCE

If you enjoy Science and prefer coursework to examinations, then this is the course for you.

Applied Science is intended to give you an insight into how Science is actually carried out in the public sector, forensic labs, public health labs, pathology labs and the private and commercial sector.

Applied Science aims to provide you with knowledge about scientific topics and understanding of the structure of science-based organisations. You will also look at the contribution Science makes to society, its impact on the environment and the use of ICT in scientific work.

You will need to have achieved a grade C or above in GCSE Maths and Science before starting this course.



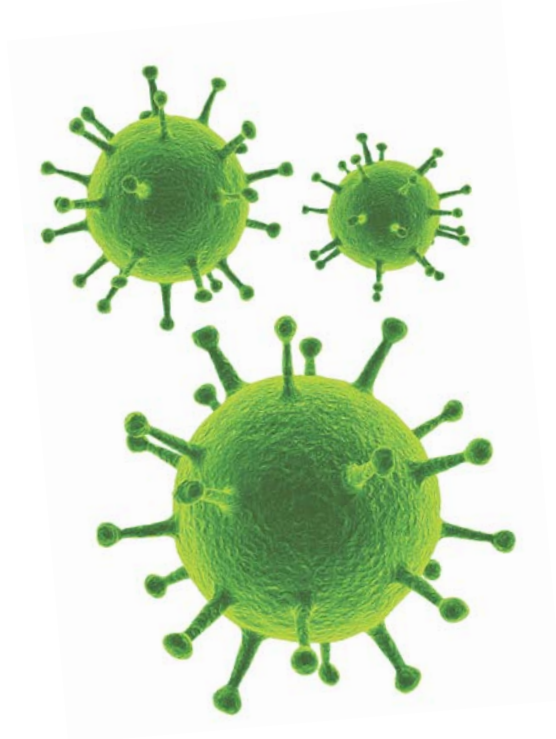
ART & DESIGN

This course will develop your artistic skills and help you gain confidence in your creativity.

This exciting course places an emphasis on your ability to research, develop and work through a range of ideas in order to find solutions that are sensitive and appropriate to the theme. This will involve exploring other artists' work as well as making visual and written inquiries.

At AS Level you will explore different techniques, processes and materials in relation to the formal elements and set project themes. At A2 Level you will show a better understanding of the formal elements and how they can be used to explore ideas and concepts. You will show more evidence of independence and develop an ability to resolve problems and put work in context. Throughout the course you will use sketch books/work journals and have evidence of visual and written research before showing more resolved pieces.

You will need to have achieved a GCSE at grade C or above in English and preferably Art before starting this course. GCSE Art and Design is not essential, although you must have a keen interest in the subject.



BIOLOGY

Biology is a topical and evolving subject and this course covers a variety of areas from evolution and ecosystems to enzymes.

You will study the following units during your AS Level course:

- Biology and Disease
- The Variety of Living Organisms
- Practical and Investigative Skills.

You will study the following units during your A2 Level course:

- Populations and Environment
- Control in Cells and Organisms
- Practical and Investigative Skills.

Career opportunities in this subject area could include a variety of professions including Medicine, Dentistry, Biochemistry, Nursing, Forensic Science, Food Science and Biotechnology.

You will need to have achieved a grade C or above in GCSE Maths, English, and Core and Additional Science, or Biology or Human Biology before starting this course. GCSE Applied Science is not an acceptable entry qualification for this subject.



BUSINESS STUDIES

This course aims to help you develop an understanding of business organisations, the market they serve and the process of adding value.

You will be considering business behaviour from a variety of perspectives, incorporating the interests of all stakeholders, using an investigative, problem solving and integrated approach.

You will learn how Business Studies draws on a variety of disciplines for its analysis and understanding. There is no coursework.

The course takes an integrated problem solving approach. At AS Level you will study two modules:

- An Introduction to Business
- Business Functions.

By studying business you will gain knowledge about the sector objectives and environment, decisions and behaviour.

At A2 Level you will develop your understanding more fully by taking Strategic Management (compulsory unit) and one optional unit:

- Marketing
- Accounting
- People in Organisation
- Business Production.

The A2 Level will also develop an in-depth analysis of Business.

You will need to have achieved grade C or above in both English and Maths before starting the course.



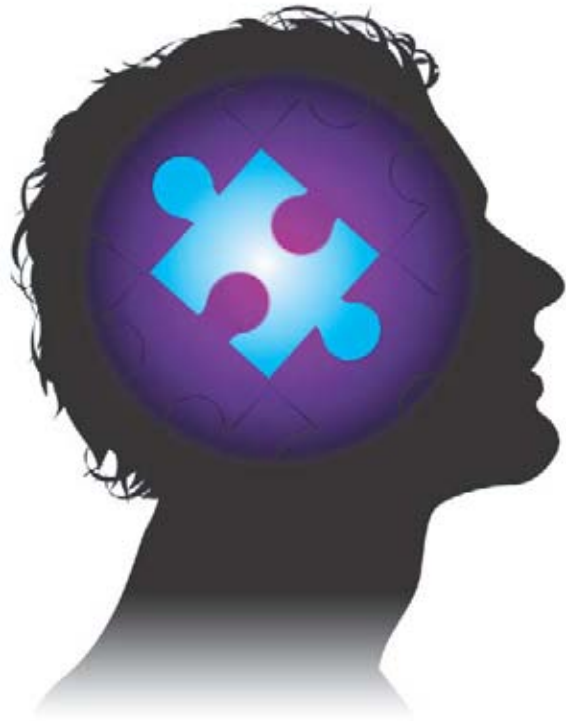
CHEMISTRY

This course aims to introduce you to Chemistry, to show you how this area of science is organised, the way in which its ideas have developed and the evidence for our current data.

You will learn through a mixture of practical and experimental work, some demonstration work, student centred learning and discussion.

Chemistry at this level tries to explain why processes happen, working out the reasons for chemical changes and the trends and patterns in these changes. To help with this, information is organised in a systematic way, such as the Periodic Table. We also study, and try to explain, rates of reaction, energy changes, equilibria, carbon chemistry and amounts of substance.

You will need to have achieved a grade C or above in GCSE Maths and Core and Additional Science or Chemistry before starting this course. GCSE Applied Science is not an acceptable entry qualification for this subject.



CRITICAL THINKING

This course will provide you with transferable skills so that you will approach tasks in other A Level subjects with more confidence.

This is a skills-based subject that assesses and develops arguments. It involves three main skills:

- understanding what an argument is claiming
- assessing if the argument works
- constructing an effective argument of your own.

Critical Thinking skills are particularly applicable to English, History and Law, but would be beneficial to any student as it shows you have attained a national standard prized both by universities and employers. The course will provide you with additional points for entry to higher education.

This course is offered to A2 students as an additional subject. To take this course it is preferable that you have achieved at least C grades in your AS subjects and also grade C or above in GCSE English.



ENGLISH LANGUAGE

This popular and stimulating course will develop your interest and enjoyment of the English Language.

The aim is to increase your knowledge about the English Language and improve your use of English in a variety of contexts.

In English Language AS Level, you will analyse texts which focus on cultural, social and creative factors in language including speech and children, language and power, the dynamics of speech and language and cultural production. These skills will be further developed in your coursework, where you choose the texts you wish to analyse and then adapt one of these to create a new text for a specific audience.

At A2 you will develop your language analysis skills more fully and apply these skills to topics such as accent and dialect, power in language and the language of popular written texts. In your coursework you will compare and contrast three different texts and produce an original media text, whilst further developing your ability to analyse your own use of language.

You will need to have achieved a grade C or above in GCSE English before beginning this course.



ENGLISH LITERATURE

This challenging and enjoyable course is for those with a dedicated enthusiasm for reading and the wish to engage in the study of a range of poetry, drama and prose.

You will explore, analyse and evaluate a variety of texts and gain a deeper understanding of the history and changing traditions of literature in English.

In English Literature at AS Level, you will study five texts covering prose, poetry and drama. These will include texts published between 1800-2007, at least one of which will have been first published or performed after 1990.

For English Literature at A2 Level, you will study, in more depth, six further texts covering prose, poetry and drama. These will include a play by Shakespeare. At least three texts will have been published before 1800. You will explore contrasts, connections and comparisons between different literary texts and become aware of the significance and influence of the contexts in which literary texts are written and understood.

You will need to have achieved at least a grade B in GCSE English before starting this course.



ENVIRONMENTAL STUDIES

This contemporary and fascinating subject investigates our effect on the environment and explores the relationships between living and non-living components of the earth.

Environmental Studies complements a variety of other subjects such as Geography, Biology and Chemistry. An increasing range of career opportunities exist in environmental management, environmental protection, environmental health, business and industry, tourism and local government. Many industrial organisations are investing heavily in environmental issues.

The AS Level course builds up an understanding of the basic links within our environment. It examines topics such as global warming, and deforestation as well as wildlife conservation.

The A2 Level course looks at the management of resources and the impact of waste and pollution, drawing together the ideas from year one and applying them in a global context.

Although GCSE Science and Geography are useful pre-requisites for this course, they are not essential.



ETHICS AND PHILOSOPHY

The course aims to promote an enquiring and analytical approach to ethics and philosophy.

Ethics and Philosophy explores key questions about the meaning of life. You will look at methods of approaching moral issues, and a consideration of the thinking of key philosophies about human existence throughout the centuries.

At AS Level you will learn about the use of ethical language, ethical theories and how to apply these to issues such as abortion, euthanasia and genetic engineering. You will consider arguments for and against whether God exists and challenges to religious belief by sociologists and psychologists. You will consider the problem of evil and suffering in the world.

At A2 Level you will look at religious ethics in more depth and how ethical theory can be applied to other practical issues. You will also learn about different views of what happens to us after death, religious experiences, discussing what religious language is and what we mean when we use it.

This course is suitable for individuals from any, or no religious background, but you will need to have achieved a grade C or above in both English and Maths before starting this course.



EXTENDED PROJECT

This course will provide you with transferable skills so that you will approach tasks in other A Level subjects with more confidence. The course is offered to all A2 students as an additional subject.

It is a skills-based subject that involves the submission of a written report of between 1000 and 5000 words supported by a diary and enhanced by a verbal, written or visual presentation.

The key elements of an Extended Project are an ability to:

- identify, design and complete an individual project to meet agreed objectives
- critically select and use information from a range of sources
- analyse data and demonstrate understanding
- use new technologies to solve problems, make decisions critically and achieve planned outcomes
- use a range of communication skills and media to present evidenced outcomes and conclusions in an appropriate format.

Success at the Extended Project demonstrates the skills and personal qualities that employers and universities are most interested in. That is breadth of experience, independent learning and self management.



FILM STUDIES

This course is for you if you have a genuine passion for film and cinema. The course will develop your knowledge and understanding of how a film works and how cinema functions as a business and an institution.

You will look at how meanings and values are created in films. Through case study of individual films, critical perspectives and institutional context, you will have the opportunity to develop a broad knowledge about film theory and spectatorship.

At AS Level, you will study a range of Hollywood and British cinema, and learn how to analyse films. This involves the 'language' of film – how the camera is used, the importance of sound and lighting, editing, narrative and genre. You will learn about production, distribution and exhibition, producers, stars and audiences. We look in detail at a particular aspect of British cinema and study one particular film very closely. The coursework consists of two written analyses and a portfolio of creative work. This includes ideas for a film and developing this as a storyboard or script.

At A2 Level, the emphasis of the course is World cinema. There are opportunities to study a wide range of topics such as censorship, film performance, surrealist and fantasy cinema. The coursework for A2 includes a personal research project into cinema authorship, and there is a choice of practical work – screenwriting, filmmaking or film journalism.

You will need to have a grade C or preferably higher in GCSE English before starting this course.



GEOGRAPHY

This is an exciting and challenging course that looks at both our impact upon the earth and the forces of nature that have sculpted our planet.

This subject complements a variety of other AS/A2 Level courses including Biology, Environmental Studies, Ethics and Psychology. Career opportunities are many and varied from Meteorology to Environmental Management, from Town Planning to Mineral exploration and in fact any vocation that requires an ability to organise and present information in a coherent way.

At AS Level, you will study both physical and human processes, ranging from the study of physical environments such as rivers and coasts to human issues relating to population and health.

Each topic is linked to fieldwork and aims to provide you with a range of skills to appreciate and understand the earth as an integrated system in which all our actions have a knock on effect.

At A2 Level, you will investigate a wide range of topics including volcanoes, earthquakes, deforestation and urban problems complemented by a range of fieldtrips. This develops further and enhances your understanding of the earth and its interrelated systems.

A grade C or above in GCSE Geography is preferable but not essential. You will need to have achieved a grade C or above in both English and Maths before starting this course.



GOVERNMENT AND POLITICS

Government and Politics is an exciting and enjoyable subject, aiming to increase your knowledge of current affairs as well as examining the strength of the argument behind current political views.

The course is aimed at increasing your interest and enthusiasm for Government and Politics.

It will enable you to develop an insight into political beliefs central to an understanding of the modern world as well as increasing your overall level of political literacy. You will have the opportunity to engage in political debates and discuss a range of relevant issues in politics today. Newspapers, the Internet and current affairs programmes will be used throughout the course to keep material up to date, interesting and relevant.

The AS Level provides an introduction to Government and Politics through an examination of the political process in the UK as well as its democratic and political institutions. Areas studied will also include the Constitution, Parliament, the Prime Minister and his Government, the judiciary and civil liberties, pressure groups as well as elections and electoral reform.

At A2 Level the course allows a more specialised in depth approach focusing on political ideologies such as Liberalism, Conservatism, Socialism and Anarchism. It will also explore other ideologies such as Nationalism, Feminism, and Multi-culturalism.

Career opportunities are many and various as Government and Politics provides you with the confidence to analyse, assess and engage in constructive debate.

You will need to have achieved a grade C or above in English and Maths before starting this course.



HISTORY

This fascinating and stimulating subject explores modern history and will provide you with a greater understanding of the world today.

This course will enable you to think logically and analytically and make sound judgements. It is an interactive course and you will have lots of opportunities to participate in discussions and activities.

You will study the following units for AS Level:

- Totalitarian Ideology in Theory and Practice: Marxism, Stalin and the Soviet Union 1924 - 1941, Fascism, Mussolini and Italy 1919 - 1940 and Nazism, Hitler and Germany 1928 - 1939.
- A Sixties Social Revolution? British Society, social and cultural changes 1959 - 1975.

You will study the following units for A2 Level:

- The State and People: Britain 1918 - 1964.
- Historical Enquiry analysing a historical issue (coursework): The Great Powers and the Origins of Two World Wars 1815 - 1941.

History is highly thought of by law departments and the media. It is an excellent foundation subject for careers in teaching, public service, administration and any other vocation in which you need to think logically. It is a dynamic and versatile subject and complements English Language and Sociology well.

You will need to have achieved a grade C or above in English before starting this course.



HUMAN BIOLOGY

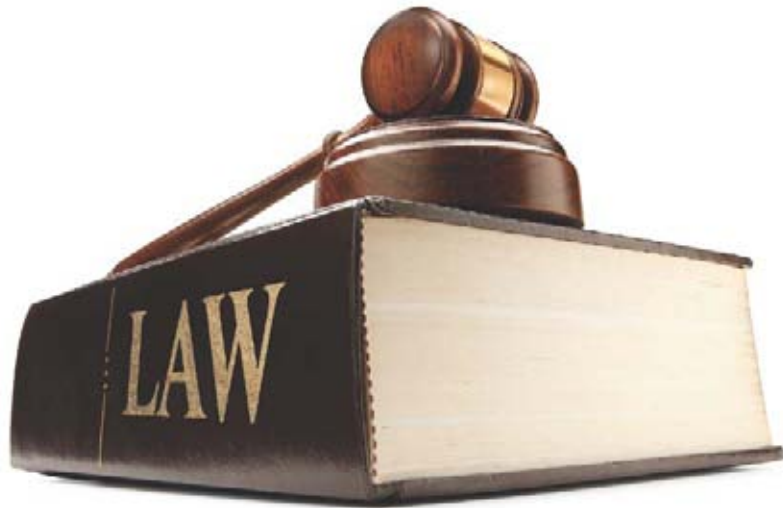
Human Biology is an interesting and contemporary subject, which investigates the human anatomy and physiology.

This is a good choice of subject if you would like a career in any paramedical field or if you want to specialise in sports studies. It is useful for any health-related occupation including Nursing, Chiropody, Physiotherapy, Occupational Therapy, Dietetics, Food Science, Biotechnology, Laboratory Technician, Forensic Science and many others.

At AS Level you will study the body and disease, humans - their organs and adaptations and a centre assessed unit.

At A2 Level you will study the body and cells in and out of control, the air we breathe, the water we drink, the food we eat and a centre assessed unit.

You will need to have achieved a grade C or above in GCSE Maths, English and Core and Additional Science, or Biology or Human Biology before starting this course. GCSE Applied Science is not a suitable entry qualification for this subject.



LAW

Society is governed by rules and this course will provide you with an understanding of the English Legal System with reference to aspects of Common Law, European Law and Legal Reasoning.

Throughout the AS Level course you will acquire the following skills:

- legal method and reasoning
- logical thinking, critical analysis and problem solving by applying legal rules
- the ability to communicate legal arguments and conclusions with reference to appropriate legal authority
- critical awareness of the changing nature of law in society.

The A2 Level course will develop this even further with an in depth analysis of Criminal Law.

You will need to have achieved a grade C or above in English and Maths before starting this course as it requires a substantial amount of rigorous analysis and interpretation of evidence.



MATHEMATICS

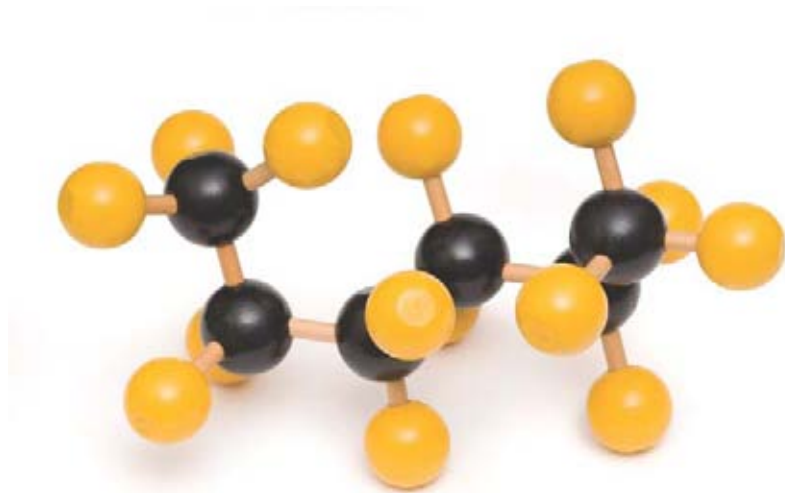
The aim of this course is to develop your understanding of mathematics and mathematical processes in a way that promotes confidence and fosters enjoyment.

This course will enable you to recognise how a real-life situation may be represented mathematically. You will acquire the skills needed to use technology such as calculators and computer software packages effectively to solve mathematical problems.

At AS Level you will study a number of units in the three main Mathematical disciplines of Pure Mathematics, Statistics and Applied Mathematics. Usually you would take two units in Pure Mathematics plus one unit in Statistics in your first year.

At A2 Level you will add to your three AS units with two more Pure Mathematics units plus a unit in Mechanics or Decision Mathematics.

You will need to have achieved at least a grade B at Higher Level in GCSE Mathematics and have an average GCSE score of grade C before starting this course.



PHYSICS

This logical subject enables you to study the world in which we live and attempt to understand and interpret it.

If you enjoy problem-solving, handling numbers and theories and like a challenge then this is the course for you.

In the first year, at AS Level, you will learn about forces and their effect on various structures, linear motion, car safety, electricity, wave motion and light. Much of the work is covered by practical experiments and demonstrations, which are also designed to develop experimental and investigative skills.

In the second year, at A2 Level, the course covers electromagnetism, thermal physics, radioactivity, nuclear physics, medical physics and the structure of the universe, along with the connections between the different aspects of Physics in a way relevant to the world around us.

You will need to have achieved a grade C or above in GCSE Maths (although a B is strongly recommended), and Core and Additional Science or Physics before starting this course. GCSE Applied Science is not an acceptable entry qualification for this subject.



PSYCHOLOGY

This intriguing subject gives you the chance to study mind and behaviour.

At AS Level, you will study two units. The first unit will examine 15 core studies, which are either classics in psychology or studies that raise interesting debates and issues. You will also conduct four psychological investigations including a questionnaire, observation, correlation and experiment. The aim of the AS Level qualification is to develop knowledge and understanding over a broad range of psychological research.

During the second year at A2 Level you will study Applied Psychology. This will involve two separate units:

- Forensic Psychology will allow you to learn more about the origins of criminal behaviour, psychology in the courtroom and how psychology can inform the investigative process.
- Health and Clinical Psychology will address issues relating to lifestyle, stress, dysfunctional behaviour and psychological disorders.

You will need to have a grade C or above in GCSE English and Maths before starting this course.



SCIENCE IN SOCIETY

Science affects us all. We are surrounded by products produced by scientific processes. Our world is being changed by science.

This course is about debating the issues. Case studies will be considered from areas related to health, medicine, fuels and energy.

You will be expected to give your informed opinion. You are not expected to already know a lot of science, just be interested and to be prepared to debate the issues. The information is provided, you have to supply the thoughts. This is for students doing science-based courses who want to know how science is being used and reflect on its significance in a broader context. This is also for students doing non-science courses who are interested in what is happening to our world and want to know more about the process behind the decisions which are made. It also broadens the range of study.

This course is offered to A2 Level students as an additional subject. Those taking this course have usually achieved higher grades in their AS subjects.



SOCIOLOGY

Sociology requires you to take a step back from your own view of the world and explore social influences that shape people's lives.

You will look at different methods of research and examine in more detail particular aspects of social life, e.g. family life, divorce, inequality and divisions based upon social class, gender and ethnicity.

Throughout the course you will be encouraged to develop analytical and evaluative skills, and a critical awareness.

You will study the following units during your AS Level course:

- Family and Household
- Education
- Research Methods.

You will study the following units during your A2 Level course:

- Religion, Culture and Beliefs
- Crime and Deviance
- Research Methods.

You will need to have achieved a grade C or above in GCSE English before starting this course.

How to apply.

What are you waiting for?

FULL-TIME FURTHER EDUCATION APPLICATION PROCESS

It's never too early to apply for a place. Due to our high level of success and achievement and the popularity of courses, it is essential to get your application in early. After receiving your application form we will normally invite you into College to discuss your application. Following this, you may receive an offer on your chosen course, which may be subject to you achieving specified examination results.

EARLY APPLICATION 1

Early application is recommended, particularly if you have already chosen your course. To reduce the risk of disappointment, applicants that would like an early decision should apply by Friday 2 December 2011.

EARLY APPLICATION 2

You can still get an early decision if you do not choose your course during the first term. You must submit your completed application forms by Friday 2 February 2012.

CHANGING YOUR MIND?

Making the right choice about what course to do is a difficult decision for some people so of course we understand if you change your mind. If you apply for a course at the College then decide you'd prefer to study something completely different, don't worry, please come and talk to us and we can discuss what else the College can offer you.

REGULAR ADMISSIONS

Our admissions policy is to accept applications as they come in, until all spaces on a particular course have been filled. We accept applications up until the end of June 2012 or until the course is full, whichever comes first. After this the late application procedure commences, where places are limited to certain courses. To have the best chance of being accepted on your chosen course we recommend that you get your application in early.

LATE APPLICATIONS

This is for applicants who have not secured a place on a course by the end of June 2012. Available from July to end of September 2012 this process can help you find a suitable vacancy on a further education course. If you are flexible, there is a good chance you will find a place on a course. You are eligible to put in a late application if you do not hold an offer from our College, or you have not met entry criteria. Information on courses with available spaces will be displayed on our website, www.newcollegedurham.ac.uk/courses from July 2012 onwards.

APPLICATION TYPE DEADLINE

Early Application 1	2 December 2011
Early Application 2	3 February 2012
Regular Admissions	end June 2012
Late Applications	end September 2012

We welcome your application if you have a learning difficulty, a disability or other additional support needs. Please help us to ensure that you get the most from your time at New College Durham by ticking either box A or B.

- A. I would like to talk to someone about support for: (please tell us why you need support, for example dyslexia, mobility issues, deafness/loss of hearing, loss of vision, learning difficulties, medical issues, mental health issues, personal support issues or any other reasons). -----
- B. I do not need any support at the moment, but I know that I can ask for support if I need it later. (Please let us know as soon as possible if you need any special arrangements for examinations)

If you wish to provide additional information about yourself (interests, achievements etc) to support your application, please attach a separate letter.

New College Durham is an Equal Opportunities college and believes that equal opportunities for all is essential to good education and employment. To help us ensure this policy is put into practice, please complete the details below. These details will not be used in the selection procedure.

How would you describe your ethnic origin:

- | | |
|--|---|
| <input type="checkbox"/> Asian or Asian British - Bangladeshi | <input type="checkbox"/> Mixed - White and Black African |
| <input type="checkbox"/> Asian or Asian British - Indian | <input type="checkbox"/> Mixed - White and Black Caribbean |
| <input type="checkbox"/> Asian or Asian British - Pakistani | <input type="checkbox"/> Mixed - any other Mixed background |
| <input type="checkbox"/> Asian or Asian British - any other Asian background | <input type="checkbox"/> White - British |
| <input type="checkbox"/> Black or Black British - African | <input type="checkbox"/> White - Irish |
| <input type="checkbox"/> Black or Black British - Caribbean | <input type="checkbox"/> White - any other White background |
| <input type="checkbox"/> Black or Black British - any other Black background | <input type="checkbox"/> Any other |
| <input type="checkbox"/> Chinese | <input type="checkbox"/> Not known/declined answer |
| <input type="checkbox"/> Mixed - White and Asian | |

Signed: _____ Date: ____/____/____

Return to: **The Admissions Officer, New College Durham,
Framwellgate Moor Campus, DURHAM DH1 5ES**

Tel: (0191) 375 4210 Fax: (0191) 375 4222 E-mail: admissions@newdur.ac.uk

We will use the information you have provided here for the purpose of contacting you regarding the administration of your application. New College Durham is registered with the Information Commissioner as a Data Controller under the Data Protection Act 1998 and our Data Protection Policy is available from our website at www.newcollegedurham.ac.uk



New College Durham
Framwellgate Moor Campus
Durham DH1 5ES

Telephone - 0191 375 4040
Minicom - 0191 383 2371

www.newcollegedurham.ac.uk

Copyright New College Durham.
Created in-house by the Marketing and Design Team



New College Durham



European Union
European Social Fund
Investing in jobs and skills